



適航指令發布單

Airworthiness Directive Issuance Form

民航局AD編號 AD Number	CAA-2013-04-004C	發布日期 Date issued	2016/6/8
適用之航空產品 Applied to (models, serial numbers or part numbers, as applicable)	Kawasaki BK117 series helicopters equipped with a Goodrich rescue hoist assembly.		
主旨摘要	Equipment - Rescue Winch System - Test		
民航局 CAA <input type="checkbox"/> 本國產品 Native products <input type="checkbox"/> 其他個案 Other	設計國民航主關機構 Original Authorities <input type="checkbox"/> FAA <input type="checkbox"/> Germany LBA <input type="checkbox"/> EASA <input type="checkbox"/> CAA-NL <input type="checkbox"/> Brazil <input type="checkbox"/> UK CAA <input type="checkbox"/> Transport Canada Civil Aviation <input checked="" type="checkbox"/> Japan CAB <input type="checkbox"/> DGAC <input type="checkbox"/> CAA of Israel <input type="checkbox"/> Other _____		
	設計國AD編號 Original AD number	TCD-8201C-2016	
	1. 直接採用原AD之內容?(Is the original AD directly adopted?) <input checked="" type="checkbox"/> 是(Yes) <input type="checkbox"/> 否(No) ____ a. 生效日期另訂為(Re-specify the effective date as) : _____ b. 執行時限另訂為(Re-specify the compliance time or period as) : _____ 2. 使用人是否需要將AD執行結果向民航局提出報告?(Do Users need to report the status of compliance to the CAA?) <input type="checkbox"/> 是(Yes) <input checked="" type="checkbox"/> 否(No)		
備註 Note	(i) This AD supersedes the JCAB AD No. TCD-8201B-2015 (CAA-2013-04-004B). (ii) Kawasaki Service Bulletin No.KSB-117-361F dated May 23, 2016 and later JCAB approved revisions.		
註： 1. AD內容後附。 2. 航空器產品使用人得向民航局提出豁免、替代符合方法、執行時限之展延之申請。 3. 如有任何問題，請聯絡交通部民用航空局初始適航科。Tel：(02)2349-6331~3, Fax：(02)2545-8464, e-mail：adcaa@mail.caa.gov.tw Note： 1. The AD text is enclosed. 2. Exemption, an alternative method of compliance or adjustment of the compliance time may be proposed to the CAA for approval. 3. For further information, please contact Civil Aeronautics Administration on Tel：(02)2349-6331~3, Fax：(02)2545-8464, e-mail：adcaa@mail.caa.gov.tw			

KOKU-KU-KI-1572

No. TCD-8201C-2016

Date of Issue: June 3, 2016

Japan Civil Aviation Bureau

TAIKUSEI-KAIZEN-TSUHO

Airworthiness Directive

The undermentioned examinations or modifications are mandatory.

1. Applies to: Kawasaki BK117 series helicopters equipped with a Goodrich rescue hoist assembly having a Part Number (P/N) as listed in Table 2.1 of this AD.

2. Compliance is required as indicated, unless already accomplished.

To prevent injury to persons on the ground or a hoisting accident due to the overload clutch failure of the hoist, accomplish the following.

2.1 Within 10 hoist operating cycles after the effective date of this AD, accomplish a records check to determine whether, during any previous hoist load check/test, a cable was load-tested (average of 5 pulls) at 1 500 lb [680 kg] or more. If any cable is identified to have exceeded this limit during two or more hoist load checks/tests, replace the affected cable with a serviceable cable within the time interval shown in paragraph 2.1.1 or 2.1.2 of this AD. For replacement of a cable, see figure 1 of this AD.

2.1.1 If any cable is identified to have exceeded this limit during three or more hoist load checks/tests, before next hoist operation, replace the affected cable with a serviceable cable.

2.1.2 If any cable is identified to have exceeded this limit during two hoist load checks/tests, before the next hoist load check/test, replace the affected cable with a serviceable cable.

Table 2.1 Affected Goodrich Hoists P/N

42325-14-1	44301-10-4	44301-10-7
------------	------------	------------

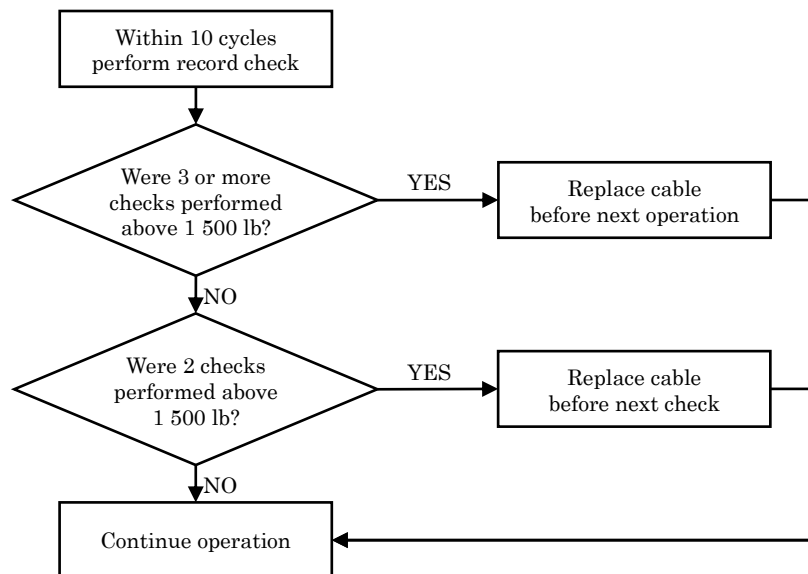


Figure 1

2.2 Within 30 days after the effective date of this AD, accomplish an initial hoist load check/test in accordance with the instructions of Kawasaki Service Bulletin No. KSB-117-361F, or later JCAB-approved revision (hereinafter referred to as SB). Any hoist load checks/tests, accomplished before the effective date of this AD in accordance with TCD-8201B-2015, are acceptable to comply with the requirements as specified by paragraph 2.2 of this AD.

2.3 Within the time interval, or hoist operating cycles specified in SB, whichever occurs first after the initial load check as required by paragraph 2.2 of this AD, and, thereafter, at intervals not to exceed the values (calendar time, or hoist operating cycles, whichever occurs first) as specified in SB, accomplish a hoist load check/test in accordance with SB for on-going testing.

2.4 If, during any hoist load check/test as required by paragraph 2.2 or 2.3 of this AD, as applicable, the hoist fails the test, deactivate the hoist and, before next hoist operation, replace the hoist with a serviceable hoist, as defined in Table 2.2 of this AD.

Table 2.2 Serviceable Goodrich Hoists

A hoist having a P/N not listed in Table 2.1 of this AD

A hoist having a P/N as listed in Table 2.1 of this AD, and having a serial number (s/n) with a “4” as the first digit (see Note 1 of this AD), and has accumulated less than 24 months, or 1 200 hoist cycles since new, or since last performed maintenance work including overload clutch replacement (e.g. overhaul)
--

Note 1: Hoists that are equipped with a new overload clutch assembly P/N are (re)identified (this modification can be done on existing hoists during overhaul) with a “4” as first digit of the s/n, e.g. 00304 becomes 40304.

- 2.5 If the hoist is equipped with an old overload clutch assembly P/N (see Note 1 of this AD), before exceeding 1 200 hoist operating cycles accumulated since November 11, 2014 (the effective date of TCD-8201A-2014), or within the compliance time (as applicable) specified in Table 2.3 of this AD, whichever occurs first, modify the helicopter by replacing the affected clutch assembly with a new overload clutch assembly P/N in accordance with SB, or remove or deactivate the hoist.

Table 2.3 Hoist Modification

Affected Hoists	Compliance Time
Manufactured new, or last performed maintenance work including overload clutch replacement (e.g. overhaul), before or on November 11, 2015	Within 36 months after November 11, 2014 (the effective date of TCD 8201A-2014)
Manufactured new, or last performed maintenance work including overload clutch replacement (e.g. overhaul), after November 11, 2015	Before exceeding 24 months since manufactured new, or last performed maintenance work including overload clutch replacement (e.g. overhaul), after November 11, 2015, as applicable

Japan Civil Aviation Bureau	No. TCD-8201C-2016	sheet 4/5
<p>2.6 Within 24 months, or 1 200 hoist operating cycles after modification of a helicopter as required by paragraph 2.5 of this AD, or at the next scheduled hoist overhaul, whichever occurs first, and, thereafter, at intervals not to exceed 24 months, or 1 200 hoist operating cycles, whichever occurs first, replace the hoist with a serviceable hoist as defined in Table 2.2 of this AD, noting the installation requirements of paragraph 2.7 of this AD.</p> <p>As an alternative to any replacement as required by this paragraph, it is acceptable to remove or deactivate the hoist, pending installation of a replacement hoist, noting the installation requirements of paragraph 2.7 of this AD.</p> <p>2.7 From 12 months after the effective date of this AD, it is allowed to install on any helicopter an affected Goodrich hoist, having a P/N as listed in Table 2.1 of this AD, provided it is a serviceable hoist as defined in Table 2.2 of this AD. Following installation, prior to hoisting operation, the hoist must pass a test as specified in paragraph 2.2 of this AD and, thereafter, the repetitive actions required by this AD must be accomplished.</p> <p>Note 2: For the purpose of this AD, reinstallation on a helicopter of a hoist that was temporarily removed from that same helicopter is not considered as “installation.”</p> <p>2.8 Within 30 days after the effective date of this AD, amend the applicable RFM(S) by including the hoist operation limitations as specified in paragraph 2.8 of this AD, and inform all flight crew members and hoist operators and, thereafter, operate the helicopter accordingly.</p> <p>Insertion of revised pages of an applicable attachment to this AD that contain this same information into the applicable RFM(S) is acceptable to comply with the requirement of paragraph 2.8 of this AD.</p> <div style="border: 1px solid black; padding: 10px; margin-top: 20px;"> <p>Operation with extended cable and load on the hook:</p> <ul style="list-style-type: none"> - Maximum permissible bank angle in turn is 20° - Warning: exceeding 15° of lateral pendulum angle/helicopter vertical axis can lead to clutch slippage <p>Caution: overload clutch is unlikely to function in case of overload</p> </div>		

Japan Civil Aviation Bureau	No. TCD-8201C-2016	sheet 5/5
<div style="border: 1px solid black; padding: 10px; margin-bottom: 10px;"> <p>OAT above 0°C</p> <p>- Maximum hoist load 550 lb [249 kg]</p> <p>OAT at or below 0°C</p> <p>- Maximum hoist load 500 lb [227 kg]</p> </div> <p>2.9 Within 30 days after the effective date of this AD, amend the applicable RFM(S) by including the instructions into the Limitations Section as specified in paragraph 2.9 of this AD, inform all flight crew members and hoist operators and, thereafter, operate the helicopter accordingly.</p> <div style="border: 1px solid black; padding: 10px; margin-bottom: 10px;"> <p>A maximum of two persons at a time (with equipment) can be hoisted, except when it can be explicitly determined that hoisting more persons (with equipment) does not exceed the maximum hoist load, e.g. when small persons or children are being hoisted.</p> </div> <p>Insertion of revised pages of an applicable attachment to this AD that contain this same information into the applicable RFM(S) is acceptable to comply with the requirement of paragraph 2.9 of this AD.</p> <p>2.10 From the effective date of this AD, if a partial peel out occurs as described in SB, before next flight, remove or deactivate the hoist or, before next hoist operation, replace the hoist with a serviceable hoist, noting the installation requirements of paragraph 2.7 of this AD.</p> <p>2.11 From the effective date of this AD, it is acceptable to install a replacement cable on a hoist / helicopter, provided that, prior to installation, it is determined that the cable was not previously load-tested at 1 500 lb (680 kg) or more.</p> <p>2.12 An alternative means of compliance with this AD may be used, if approved by the Director-General of JCAB.</p>		
<p>3. Remarks</p> <p>3.1 This AD becomes effective on June 17, 2016.</p> <p>3.2 This AD supersedes the AD No. TCD-8201B-2015 dated January 9, 2015.</p> <p>3.3 Kawasaki Service Bulletin No. KSB-117-361F dated May 23, 2016 and later JCAB approved revisions pertain to this subject.</p>		

This is the English translation. In case of any difficulty, refer to the Japanese original text.

Applies to: Kawasaki BK117, BK117A-3, BK117A-4, BK117B-1, BK117B-2, BK117C-1
helicopters Flight Manual Supplement 10-60
"RESCUE WINCH SYSTEM (CABLE LENGTH 90m)"

This insert page indicates the temporary revision of the flight manual.

Insert this page in front of an applicable page of the flight manual without removing the applicable page.

2.1.2 Maximum hoist load

OAT above 0°C

Maximum hoist load 550 lbs [249 kg]

OAT at or below 0°C

Maximum hoist load 500 lbs [227 kg]

CAUTION A MAXIMUM OF TWO PERSONS AT A TIME (WITH EQUIPMENT) CAN BE HOISTED, EXCEPT WHEN IT CAN BE EXPLICITLY DETERMINED THAT HOISTING MORE PERSONS (WITH EQUIPMENT) DOES NOT EXCEED THE MAXIMUM HOIST LOAD, E.G. WHEN SMALL PERSONS OR CHILDREN ARE BEING HOISTED.

Applies to: Kawasaki BK117, BK117A-3, BK117A-4, BK117B-1 helicopters
Flight Manual Supplement 10-60
"RESCUE WINCH SYSTEM (CABLE LENGTH 90m)"

This insert page indicates the temporary revision of the flight manual.
Insert this page in front of an applicable page of the flight manual without removing the applicable page.

2.5.4 Hoist cable pendulum angle limits

Maximum permissible bank angle
with extended cable and load on the hook 20°

WARNING IN CASE OF SIGNIFICANT LOAD FACTOR ON THE HOOK OR ABNORMAL MANEUVER DURING HOIST OPERATION WHICH RESULTS IN A POTENTIAL OVERLOAD CLUTCH SLIPPAGE, PERFORM A HOIST MAINTENANCE IN ACCORDANCE WITH THE APPLICABLE MAINTENANCE MANUAL BEFORE THE NEXT FLIGHT.

CAUTION TO PREVENT SLIPPAGE OF THE HOIST CABLE DUE TO ACTIVATION OF THE OVERLOAD CLUTCH, MINIMIZE CABLE PENDULUM (WITHIN 15° OF LATERAL PENDULUM ANGLE) AND THE FOLLOWING LOAD FACTORS ON THE HOOK SHALL BE AVOIDED:

- ABRUPT MANEUVERS AND RAPID TURNS
- SUDDEN REVERSALS OF HOISTING DIRECTION OR SUDDEN STOPPING OF THE CABLE AT HIGH SPEEDS OF HOISTING

2.5.6 Others

- Takeoff and landing with slinging person (s) or cargo (s) on the hoist hook, are not permissible.
- Hoist operators shall prevent hazards to the aircraft resulting from a cable snag as correct functioning of the overload clutch is not guaranteed.

Applies to: Kawasaki BK117B-2, BK117C-1 helicopters
Flight Manual Supplement 10-60
"RESCUE WINCH SYSTEM (CABLE LENGTH 90m)"

This insert page indicates the temporary revision of the flight manual.
Insert this page in front of an applicable page of the flight manual without removing the applicable page.

2.5.4 Hoist cable pendulum angle limits

Maximum permissible bank angle
with extended cable and load on the hook 20°

WARNING IN CASE OF SIGNIFICANT LOAD FACTOR ON THE HOOK OR ABNORMAL MANEUVER DURING HOIST OPERATION WHICH RESULTS IN A POTENTIAL OVERLOAD CLUTCH SLIPPAGE, PERFORM A HOIST MAINTENANCE IN ACCORDANCE WITH THE APPLICABLE MAINTENANCE MANUAL BEFORE THE NEXT FLIGHT.

CAUTION TO PREVENT SLIPPAGE OF THE HOIST CABLE DUE TO ACTIVATION OF THE OVERLOAD CLUTCH, MINIMIZE CABLE PENDULUM (WITHIN 15° OF LATERAL PENDULUM ANGLE) AND THE FOLLOWING LOAD FACTORS ON THE HOOK SHALL BE AVOIDED:

- ABRUPT MANEUVERS AND RAPID TURNS
- SUDDEN REVERSALS OF HOISTING DIRECTION OR SUDDEN STOPPING OF THE CABLE AT HIGH SPEEDS OF HOISTING

2.5.7 Others

- Takeoff and landing with slinging person (s) or cargo (s) on the hoist hook, are not permissible.
- Hoist operators shall prevent hazards to the aircraft resulting from a cable snag as correct functioning of the overload clutch is not guaranteed.

Applies to: Kawasaki BK117C-2 helicopters Flight Manual Supplement 10-29
"RESCUE WINCH SYSTEM"

This insert page indicates the temporary revision of the flight manual.

Insert this page in front of an applicable page of the flight manual without removing the applicable page.

2.3.2 Maximum hoist load

OAT above 0°C

Maximum hoist load 550 lbs [249 kg]

OAT at or below 0°C

Maximum hoist load 500 lbs [227 kg]

CAUTION A MAXIMUM OF TWO PERSONS AT A TIME (WITH EQUIPMENT) CAN BE HOISTED, EXCEPT WHEN IT CAN BE EXPLICITLY DETERMINED THAT HOISTING MORE PERSONS (WITH EQUIPMENT) DOES NOT EXCEED THE MAXIMUM HOIST LOAD, E.G. WHEN SMALL PERSONS OR CHILDREN ARE BEING HOISTED.

Applies to: Kawasaki BK117C-2 helicopters Flight Manual Supplement 10-29
"RESCUE WINCH SYSTEM"

This insert page indicates the temporary revision of the flight manual.

Insert this page in front of an applicable page of the flight manual without removing the applicable page.

2.6 Bank angle

Maximum permissible bank angle

with extended cable and load on the hook 20°

Applies to: Kawasaki BK117C-2 helicopters Flight Manual Supplement 10-29
"RESCUE WINCH SYSTEM"

This insert page indicates the temporary revision of the flight manual.

Insert this page in front of an applicable page of the flight manual without removing the applicable page.

2.8.2 Pendulum / deflection angle

WARNING IN CASE OF SIGNIFICANT LOAD FACTOR ON THE HOOK OR ABNORMAL MANEUVER DURING HOIST OPERATION WHICH RESULTS IN A POTENTIAL OVERLOAD CLUTCH SLIPPAGE, PERFORM A HOIST MAINTENANCE IN ACCORDANCE WITH THE APPLICABLE MAINTENANCE MANUAL BEFORE THE NEXT FLIGHT.

CAUTION TO PREVENT SLIPPAGE OF THE HOIST CABLE DUE TO ACTIVATION OF THE OVERLOAD CLUTCH, MINIMIZE CABLE PENDULUM (WITHIN 15° OF LATERAL PENDULUM ANGLE) AND THE FOLLOWING LOAD FACTORS ON THE HOOK SHALL BE AVOIDED:

- ABRUPT MANEUVERS AND RAPID TURNS
- SUDDEN REVERSALS OF HOISTING DIRECTION OR SUDDEN STOPPING OF THE CABLE AT HIGH SPEEDS OF HOISTING

2.8.4 Others

Hoist operators shall prevent hazards to the aircraft resulting from a cable snag as correct functioning of the overload clutch is not guaranteed.