

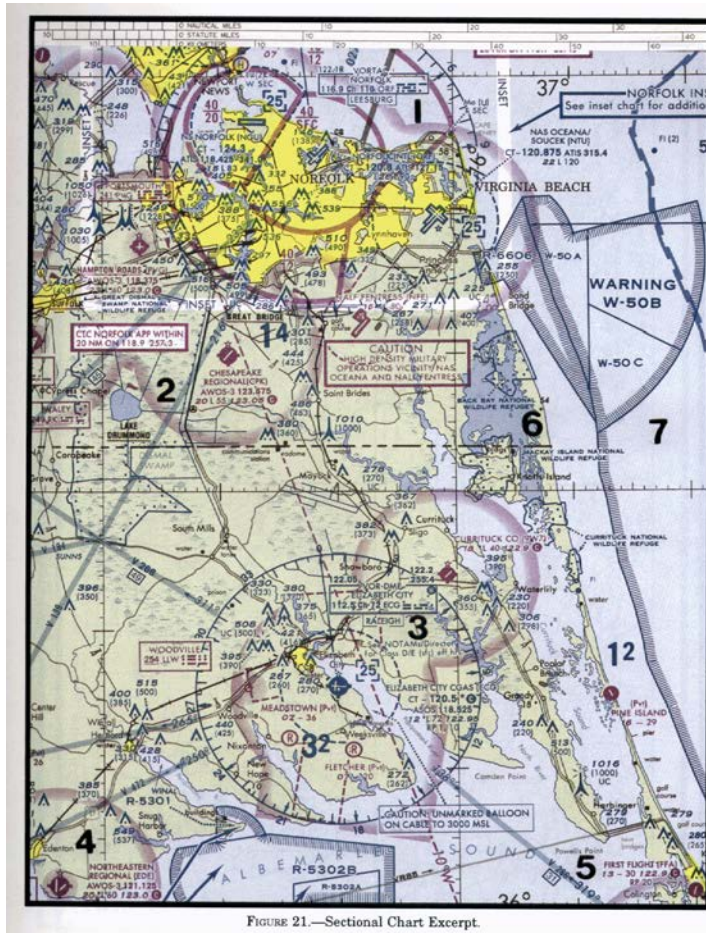
(A58) ATPL直昇機基本航行學

最近更新日期：無；更新題號：無

原始題號:0015313 題組:1 難易度:中

- (C) 1. (參照圖1)決定自First Flight機場(第5區)至Hampton Roads機場(第2區)的磁航向為何(如圖A58_Fig1)
(A)141°。 (B)321°。 (C)331°。

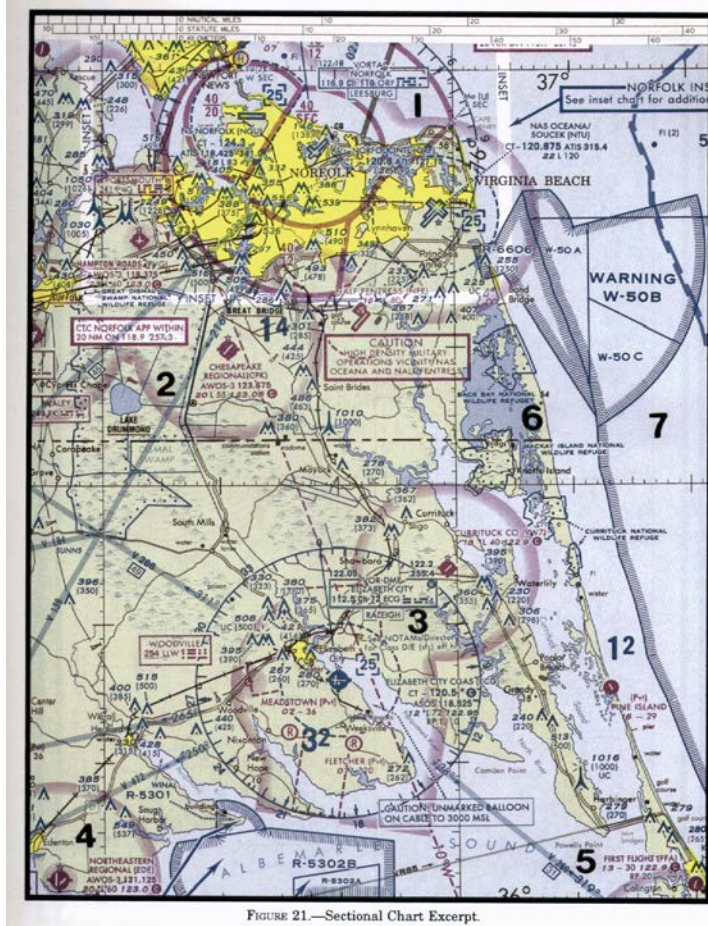
題目圖：



原始題號:0015314 題組:2 難易度:中

- (C) 2. (參照圖1)在飛往First Flight機場(第5區)的航路中，於1456時通過Hampton Roads機場(第2區)，然後於1501時飛越Chesapeake市立機場。試問到達First Flight機場時間為何?
(如圖A58_Fig1)
(A)1516。 (B)1521。 (C)1526。

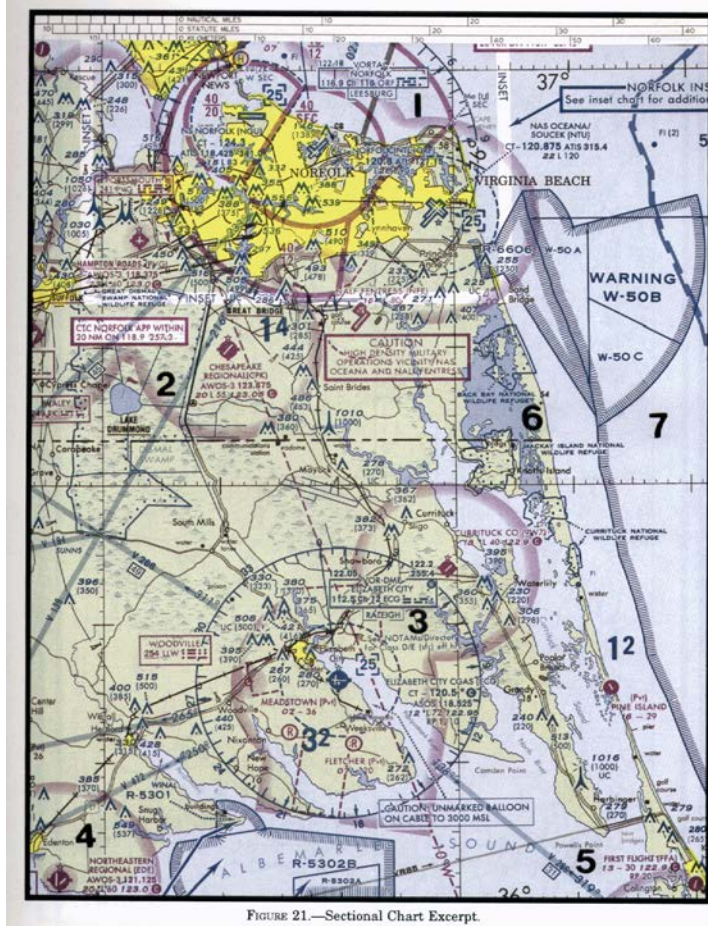
題目圖：



原始題號:0015315 題組:3 難易度:中

- (B) 3. (參照圖1)如VOR接收器顯示你在 Elizabeth市VOR的340°輻向(第3區)，試問你在 Norfolk西南(第1區)V-1低空航路的概略位置？
(如圖A58_Fig1)
- (A)距Norfolk VORTAC 15浬。(B)距Norfolk VORTAC 18浬。(C)距Norfolk VORTAC 23浬。

題目圖：



原始題號:0015316 題組:4 難易度:中

(C) 4 (參照圖1，第2區)在Drummond湖的旗形符號代表
(如圖A58_Fig1)

(A)Norfolk C類空域強制報告點。(B)Hampton Roads機場強制報告點。(C)用來辨識
Norfolk進場管制的目視檢查點。

題目圖：

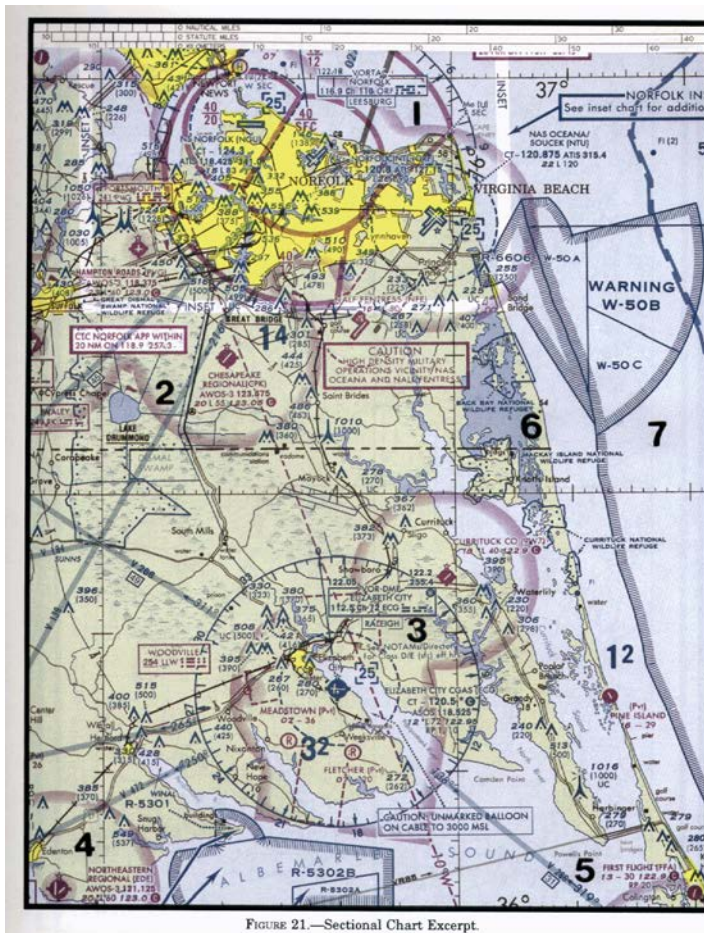


原始題號:0015317 題組:6 難易度:中

(A) 5 (參照圖1，第3區) 決定 Currituck郡機場的概略經緯度。
(如圖A58_Fig1)

(A)36°24' N - 76°01' W。 (B)36°48' N - 76°01' W。 (C)47°48' N - 75°58' W。

題目圖：



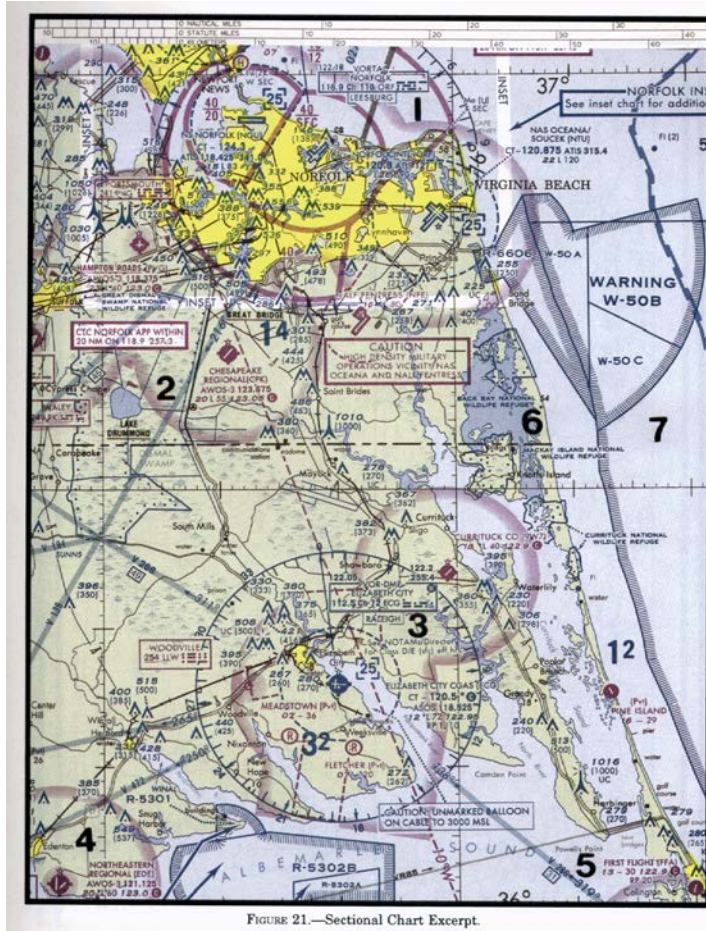
原始題號:0015318 題組:8 難易度:中

(A) 6. (參照圖1, 第5區) 注意方塊顯示對飛機之危害為何?

(如圖A58_Fig1)

(A)"未標示之繫留氣球, 高度至3,000呎MSL。" (B)"未標示之繫留氣球, 高度至3,000呎AGL。" (C)未標示之飛艇棚廠, 高度至300呎MSL。

題目圖:



原始題號:0015319 題組:1 難易度:中

(B) 7. (參照圖2) 在Minot(第1區)與Audubon(第2區)湖之間淡棕褐色區域的地形標高為 (如圖A58_Fig2)

(A)"自海平面至 2,000呎MSL。" (B)"自2,000呎至 2,500呎MSL。" (C)"自2,000呎至 2,700呎MSL。"

題目圖：

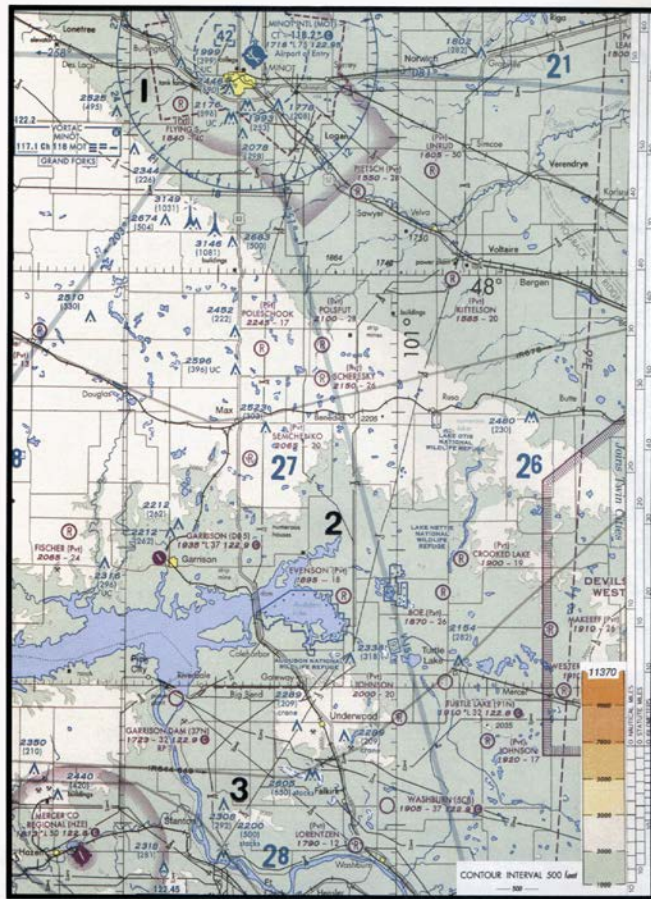


FIGURE 22—Sectional Chart Excerpt.

原始題號:0015320 題組:2 難易度:中

(B) 8.(參照圖2)哪一個公共機場圖顯示有供燃油?

(如圖A58_Fig2)

(A)Minot國際機場(第1區)與Garrison機場(第2區)。(B)Minot國際機場(第1區)與Mercer郡地區機場(第3區)。(C)Mercer郡地區機場(第3區)與Garrison機場(第2區)。

題目圖：

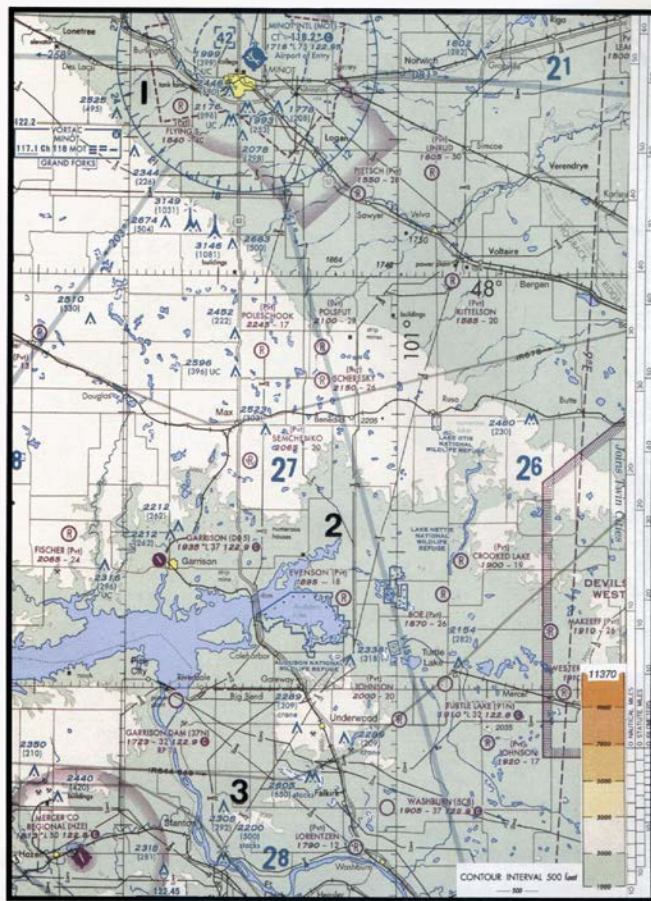


FIGURE 22.—Sectional Chart Excerpt.

原始題號:0015321 題組:3 難易度:中

(C) 9. (參照圖2)決定自Mercer郡地區機場(第3區)至Minot國際機場(第1區)之磁航向為何?風向風速為330/25, 真空速100浬, 磁偏差10°E。
(如圖A58_Fig2)
(A)002°。 (B)012°。 (C)352°。

題目圖：

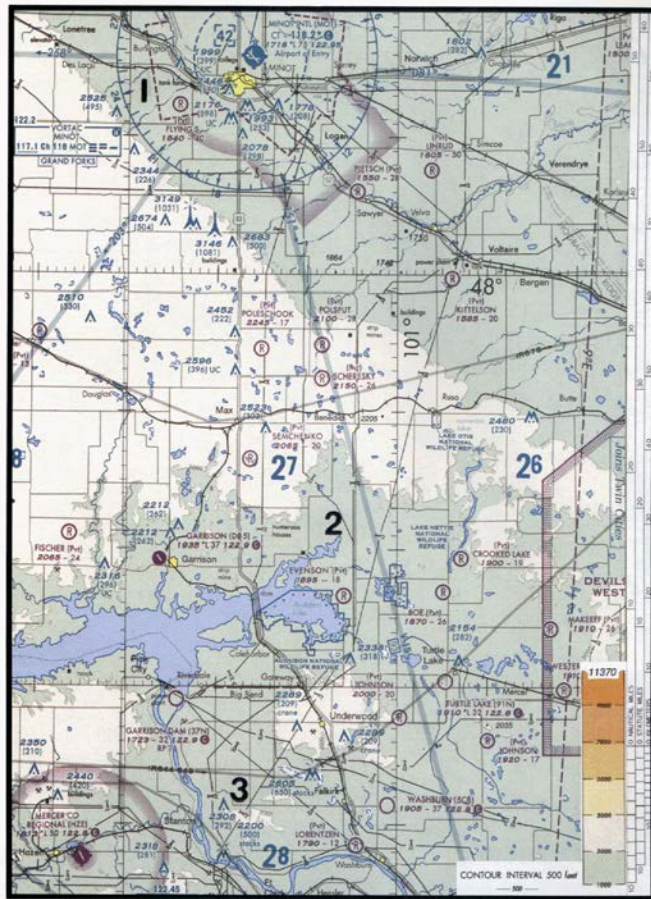


FIGURE 22.—Sectional Chart Excerpt.

原始題號:0015322 題組:4 難易度:中

- (B) 10. (參照圖2) 全方位選擇器(OBS)應調至何航向，以便導引飛機自Mercer郡地區機場(第3區)至VORTAC(第3區)且窗口顯示指向電台(TO)? (如圖A58_Fig2)
- (A)001°。 (B)359°。 (C)179°。

題目圖：

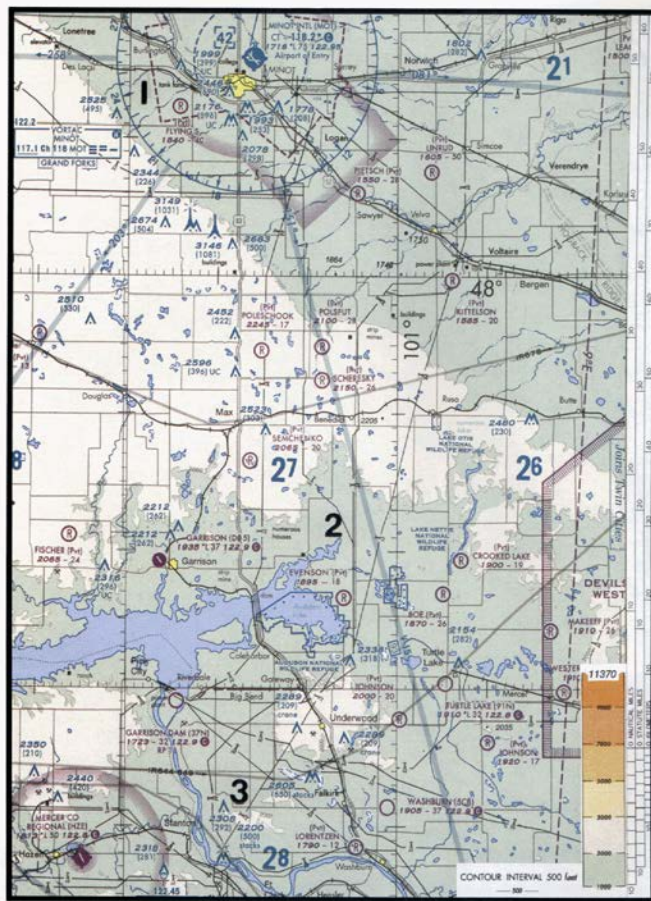


FIGURE 22.—Sectional Chart Excerpt.

原始題號:0015323 題組:5 難易度:中

(B) 11.(參照圖2，第2區)哪一個機場概略位於北緯 $47^{\circ}39'30''$ ，西經 $100^{\circ}53'00''$ ？

(如圖A58_Fig2)

(A)Linrud。(B)Crooked Lake。(C)Johnson。

題目圖：

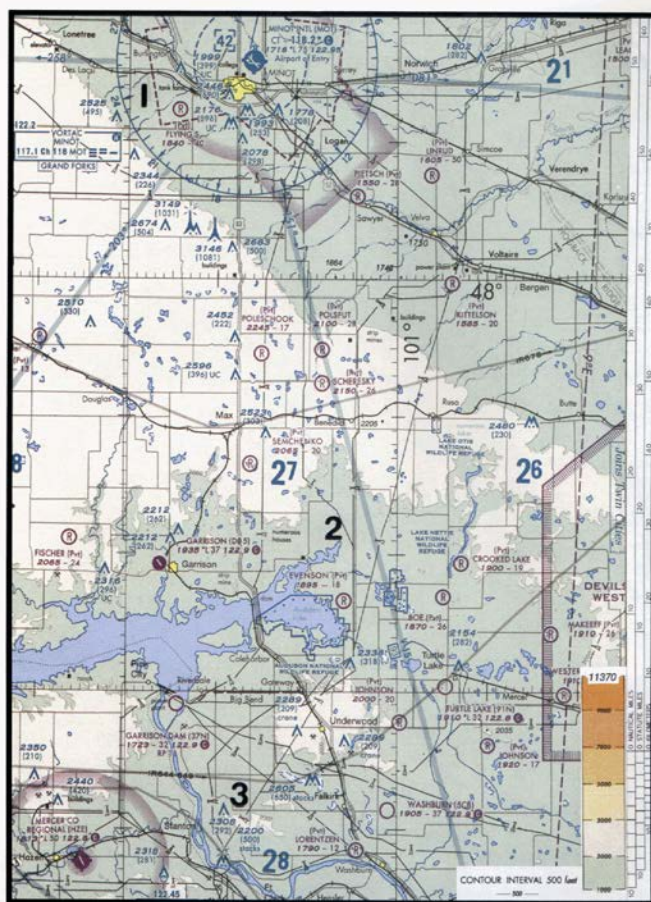


FIGURE 22.—Sectional Chart Excerpt.

原始題號:0015324 題組:6 難易度:中

(C) 12. (參照圖2, 第3區) 哪一個機場概略位於北緯 $47^{\circ}21'$, 西經 $100^{\circ}01'$?

(如圖A58_Fig2)

(A)Underwood。 (B)Evenson。 (C)Washburn。

題目圖:

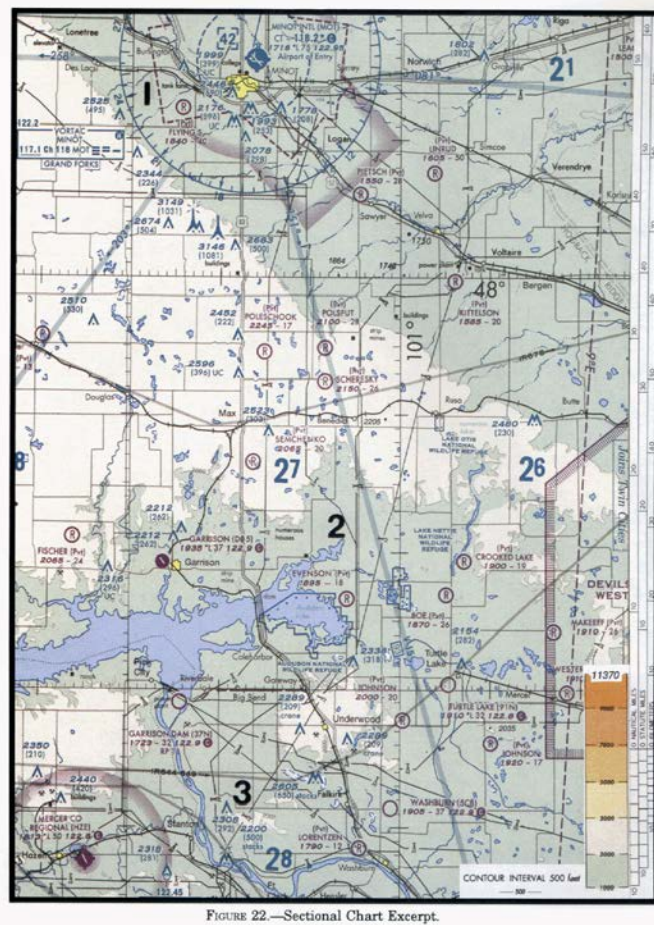


FIGURE 22—Sectional Chart Excerpt.

原始題號:0015325 題組:7 難易度:中

(B) 13. (參照圖2, 第3區) 決定 Shoshone郡機場的概略經緯度。

(如圖A58_Fig2)

(A) $47^{\circ}02'N - 116^{\circ}11'W$ 。 (B) $47^{\circ}33'N - 116^{\circ}11'W$ 。 (C) $47^{\circ}32'N - 116^{\circ}41'W$ 。

題目圖：

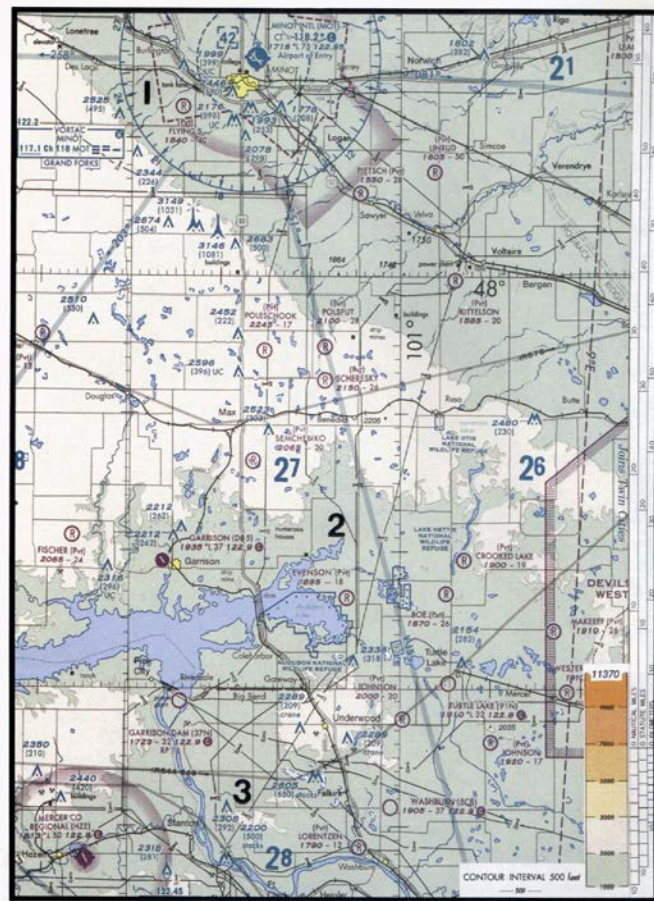


FIGURE 22—Sectional Chart Excerpt.

原始題號:0015326 題組:2 難易度:中

- (C) 14. (參照圖3)決定自Priest河機場(第1區)至Shoshone郡機場(第3區)的預計航路時間為何
風向風速為030/12，真空速為195浬，加2分鐘爬升時間。
(如圖A58_Fig3)
(A)29 分。(B)27 分。(C)31 分。

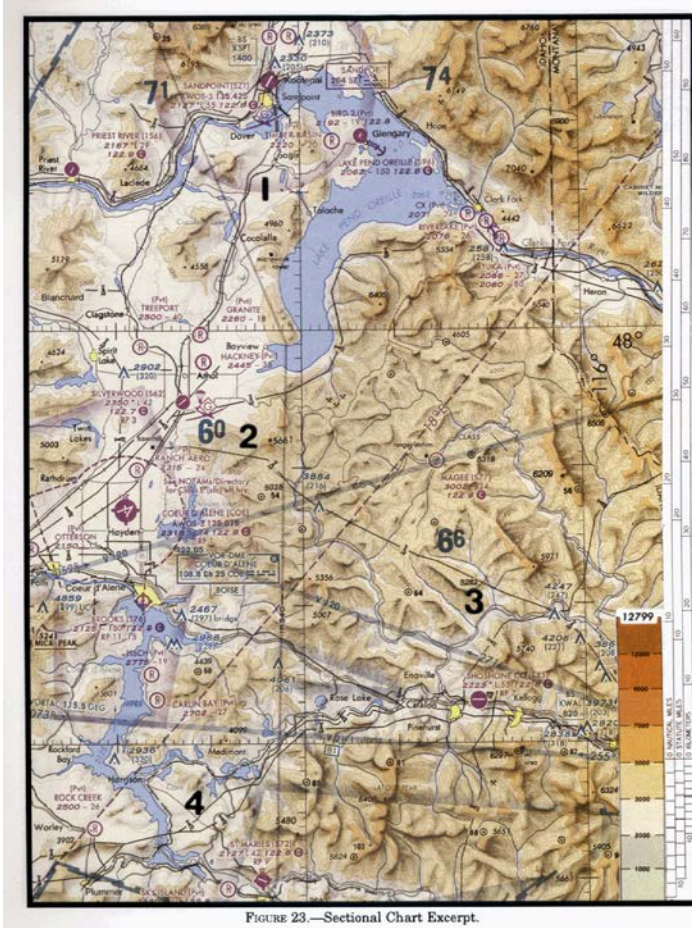
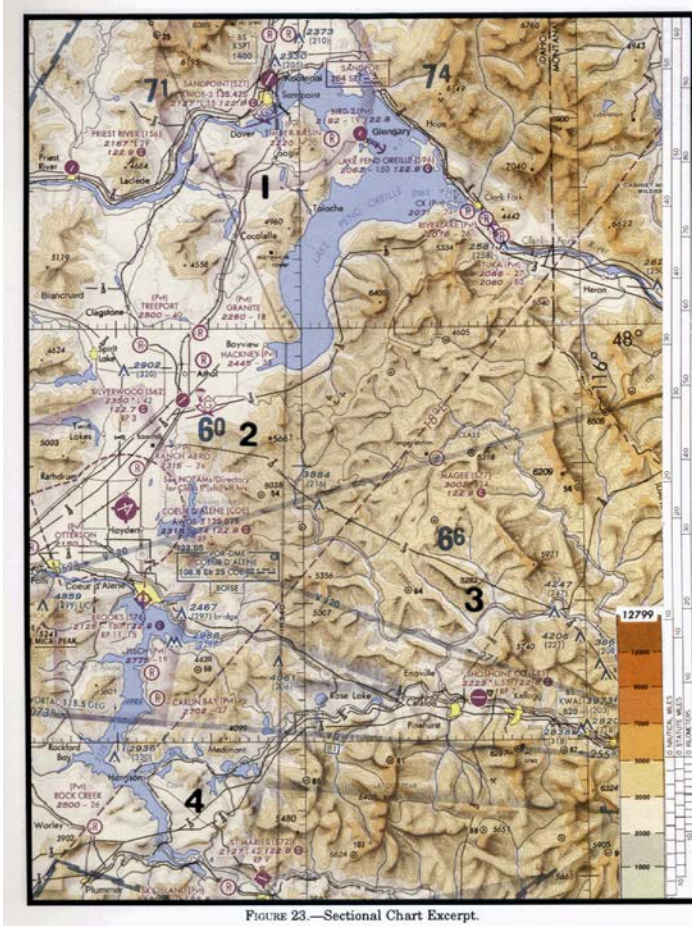


FIGURE 23.—Sectional Chart Excerpt.

原始題號:0015327 題組:3 難易度:中

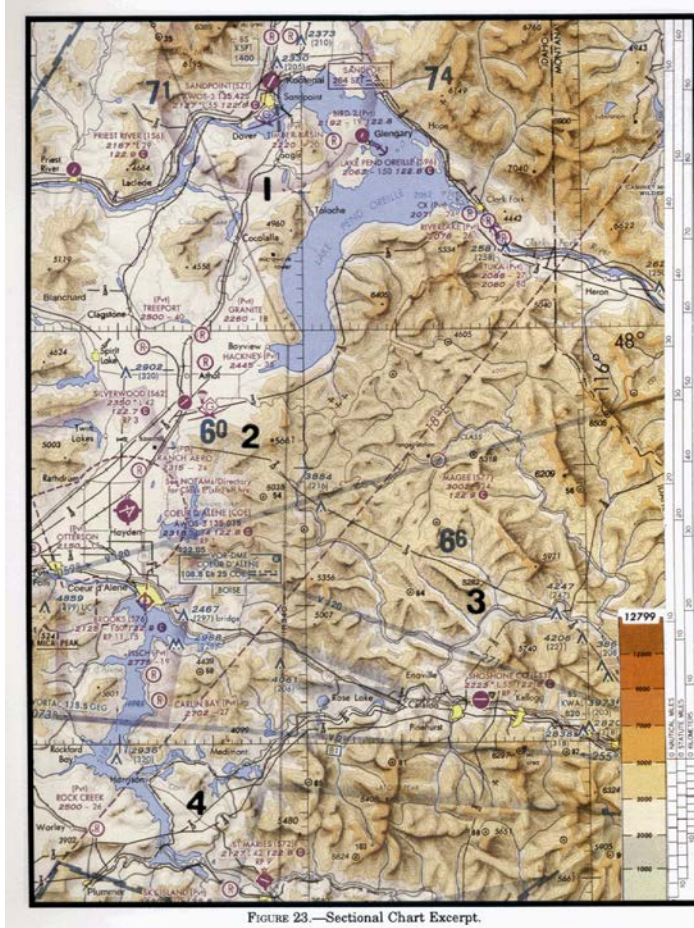
- (B) 15. (參照圖3)決定自 St. Maries機場(第4區)至Priest河機場(第1區)的預計航路時間為何?風向風速為300/14，真空速為90浬，加3分鐘爬升時間。
(如圖A58_Fig3)
(A)38分。 (B)43分。 (C)48 分。



原始題號:0015328 題組:4 難易度:中

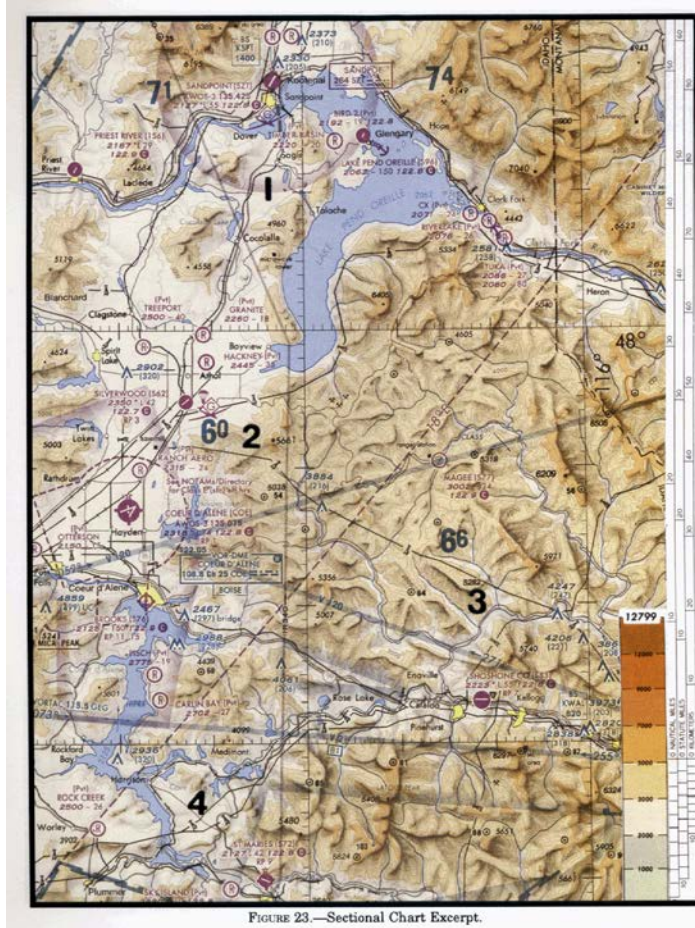
- (C) 16. (參照圖3)決定自Alendale郡機場(第1區)至Claxton-Evans郡機場(第2區)的預計航路時間為何?風向風速為100/18，真空速為115浬，加2分鐘爬升時間。
(如圖A58_Fig3)
(A)33 分。(B)27 分。(C)30 分。

題目圖：



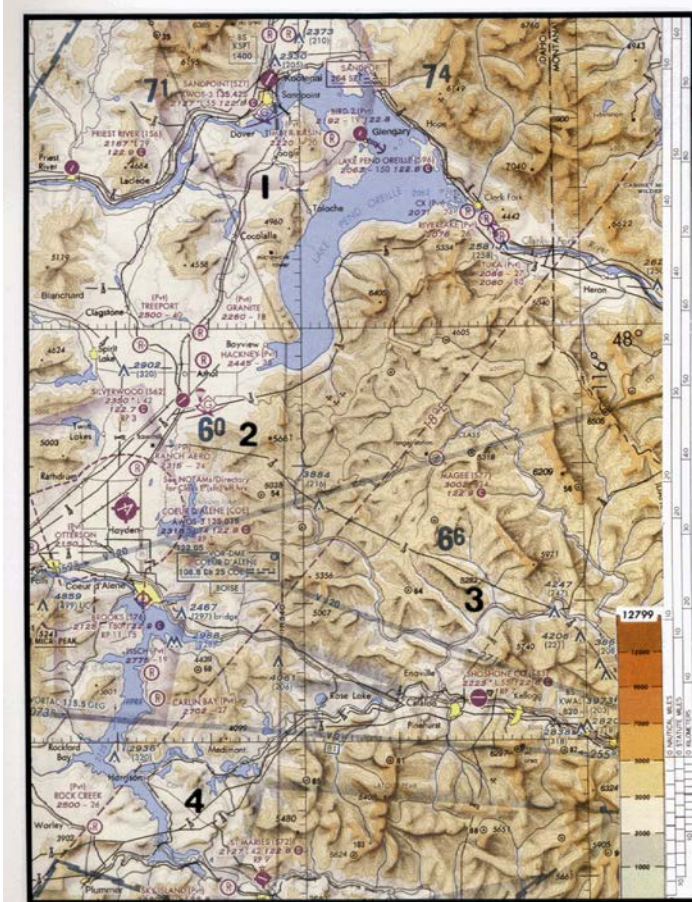
原始題號:0015329 題組:5 難易度:中

- (A) 17. (參照圖3)決定自Sandpoint機場(第1區)至St. Maries機場(第4區)之磁航向為何?風向風速為215/25, 真空速125浬。
(如圖A58_Fig3)
(A)169°。 (B)349°。 (C)187°。



原始題號:0015330 題組:6 難易度:中

- (A) 18. (參照圖3)決定自Priest River機場(第1區)至Shoshone郡機場(第3區)之磁航向為何?
風向風速為030/12, 真空速95浬。
(如圖A58_Fig3)
(A)118°。 (B)143°。 (C)136°。



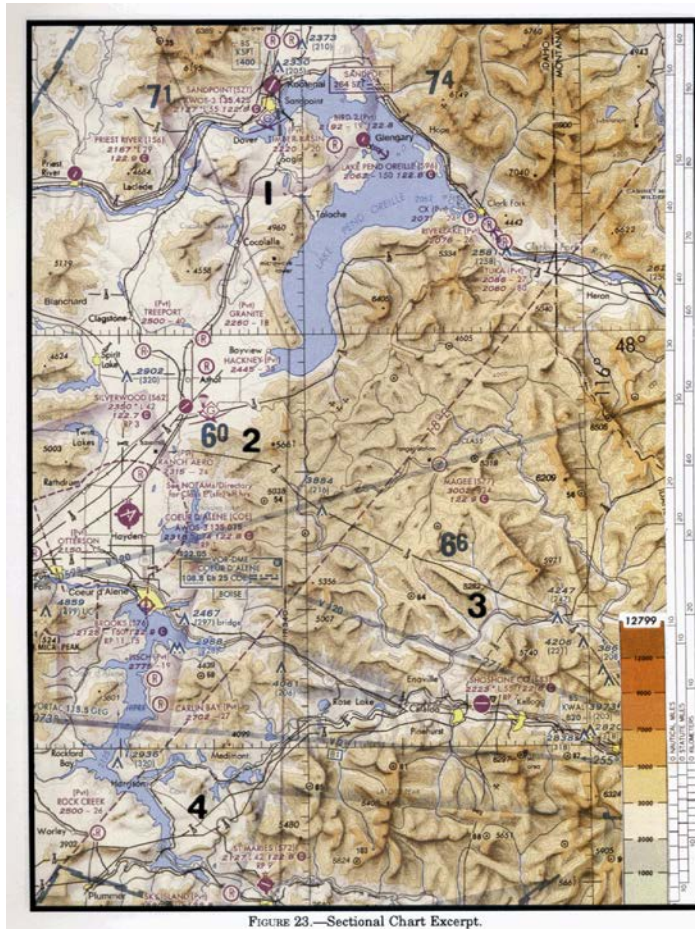
(A58) ATPL直昇機基本航行學

最近更新日期：無；更新題號：無

原始題號:0015331 題組:7 難易度:中

- (C) 19. (參照圖3)決定自St. Maries機場(第4區)至Priest River機場(第1區)之磁航向為何?
風向風速為340/10, 真空速90浬。
(如圖A58_Fig3)
(A)345°。 (B)320°。 (C)327°。

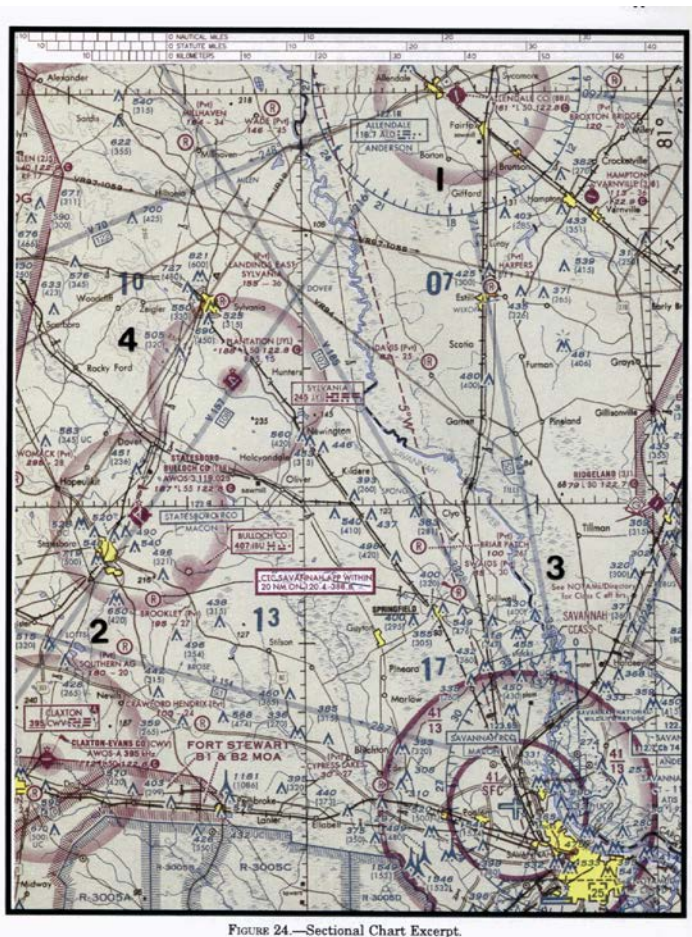
題目圖：



原始題號:0015332 題組:1 難易度:中

- (C) 20. (參照圖4)在Statesboro Bullock郡機場, Claxton-Evans郡機場, 及Ridgeland機場的旗形符號為
(如圖A58_Fig4)
(A)Savannah C類空域之外界。 (B)特殊航線機場。 (C)用來辨識進入Savannah C類空域前的目視檢查點。

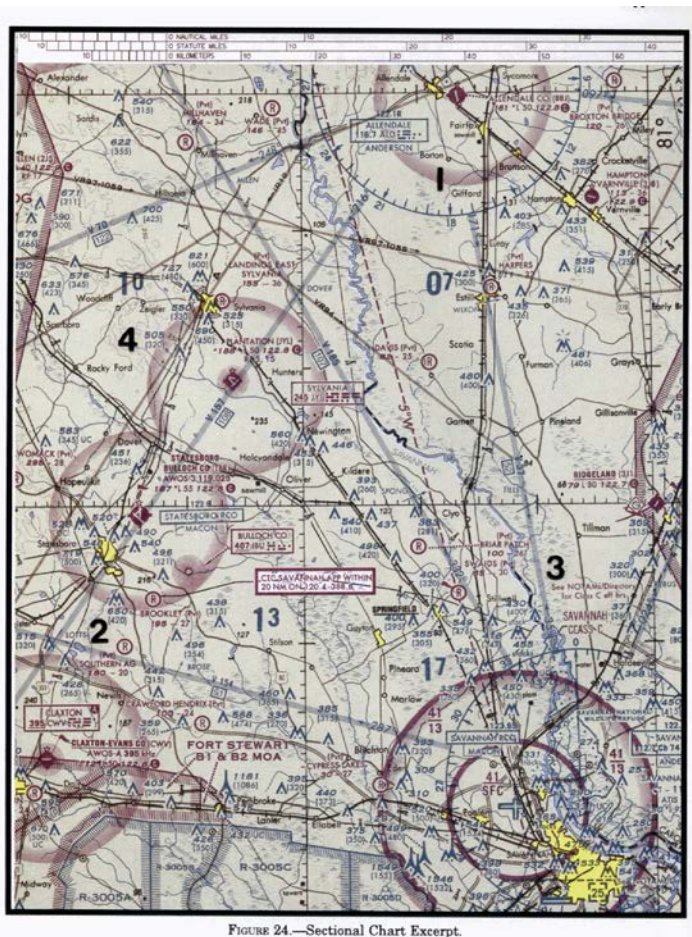
題目圖：



原始題號:0015333 題組:2 難易度:中

- (B) 21. (參照圖4)決定自Claxton-Evans郡機場(第2區)至Hampton Varnville機場(第1區)的預計航路時間為何?風向風速為290/18，真空速為85浬，加2分鐘爬升時間。
(如圖A58_Fig4)
(A)35 分。 (B)39 分。 (C)44 分。

題目圖：



原始題號:0015334 題組:3 難易度:中

- (C) 22. (參照圖4)在V-185航路飛行時，於0935通過Allendale VOR的248°輻向，再於1000通過Allendale VOR的216°輻向，試問預計到達Savannah VORTAC時間為何？(如圖A58_Fig4)
- (A)1023。 (B)1036。 (C)1028。

題目圖：



FIGURE 24.—Sectional Chart Excerpt.

原始題號:0015335 題組:4 難易度:中

- (A) 23. (參照圖4)決定自Allendale郡機場(第1區)至Claxton-Evans郡機場(第2區)之磁航向為何?風向風速為090/16，真空速90浬。
(如圖A58_Fig4)
(A)208°。(B)230°。(C)212°。

題目圖：

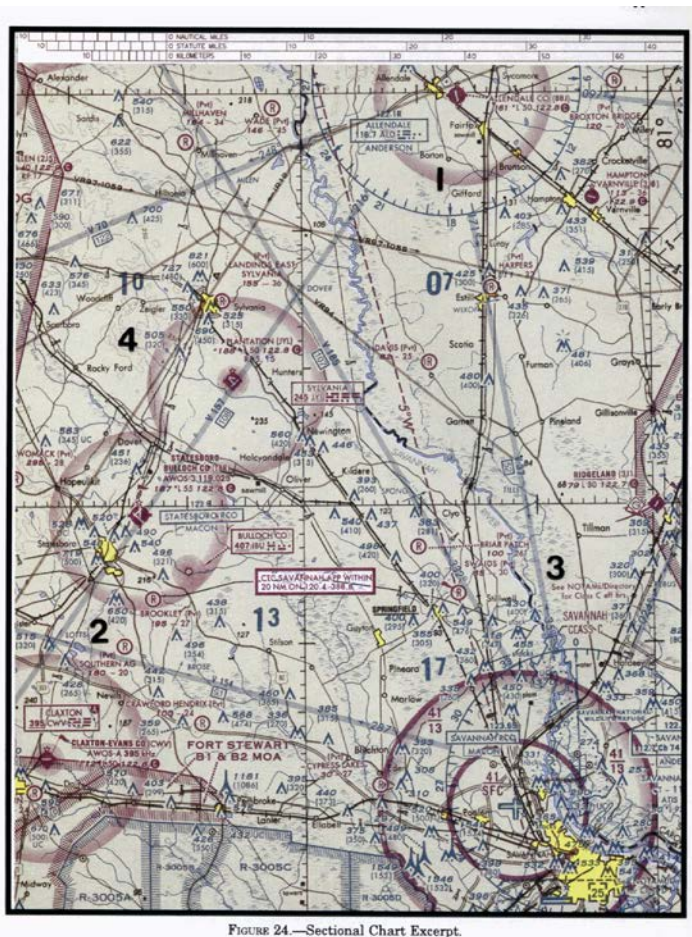


FIGURE 24.—Sectional Chart Excerpt.

原始題號:0015336 題組:5 難易度:中

- (B) 24. (參照圖4) VOR接收器(OBS)應調至何航向，以便導引飛機自Hampton Vamville機場(第1區)至Savannah VORTAC(第3區)?
(如圖A58_Fig4)
(A)003°。 (B)183°。 (C)200°。

題目圖：



FIGURE 24.—Sectional Chart Excerpt.

原始題號:0015337 題組:1 難易度:中

- (A) 25. (參照圖5)決定自Airpark East機場(第1區)至Winsboro機場(第2區)的磁航向為何? 當地磁偏差為 $6^{\circ}30' E$
(如圖A58_Fig5)
(A) 075° 。 (B) 082° 。 (C) 091° 。

題目圖：

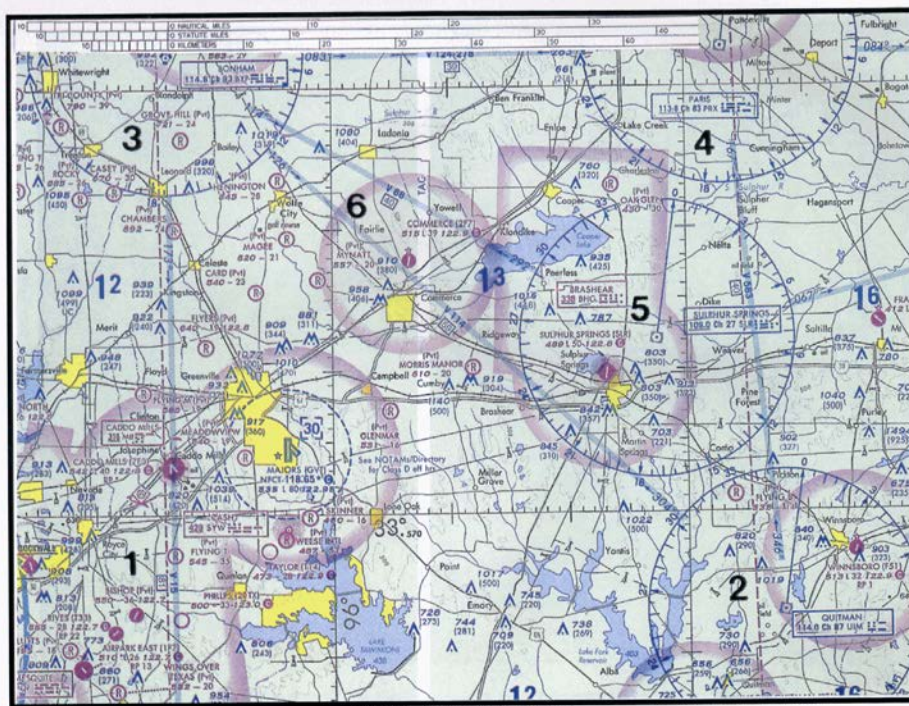


FIGURE 25.—Sectional Chart Excerpt.

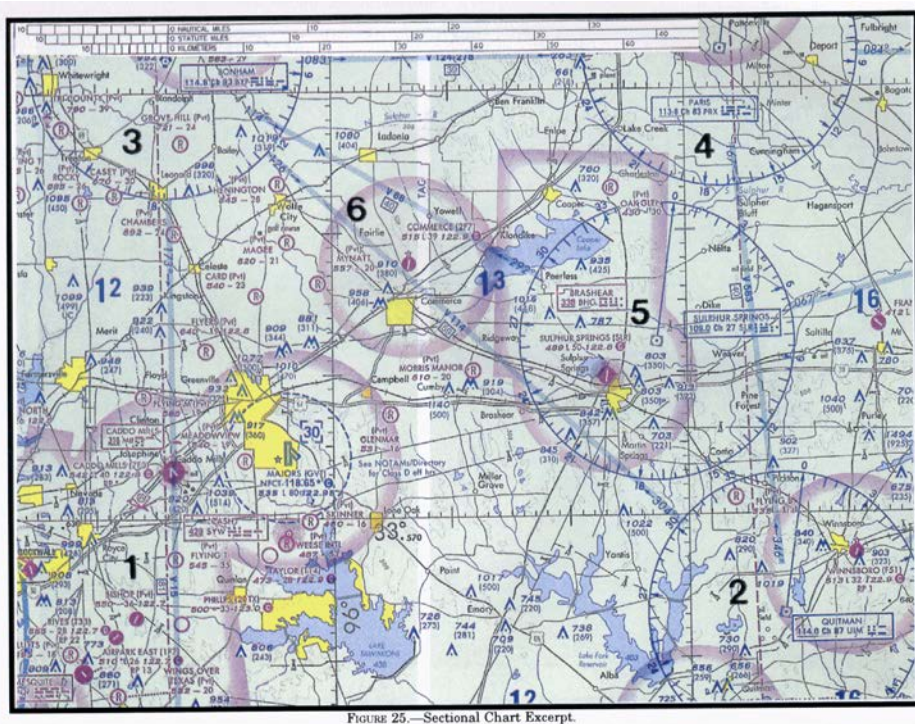
原始題號:0015338 題組:2 難易度:中

(B) 26. (參照圖5)若VOR接收器顯示為Sulphur Springs VOR-DME(第5區)的 245° 輻向及Bonham VORTAC(第3區)的 140° 輻向,則飛機的概略位置為?

(如圖A58_Fig5)

(A)Meadowview機場。(B)Glenmar機場。(C)Majors機場。

題目圖:



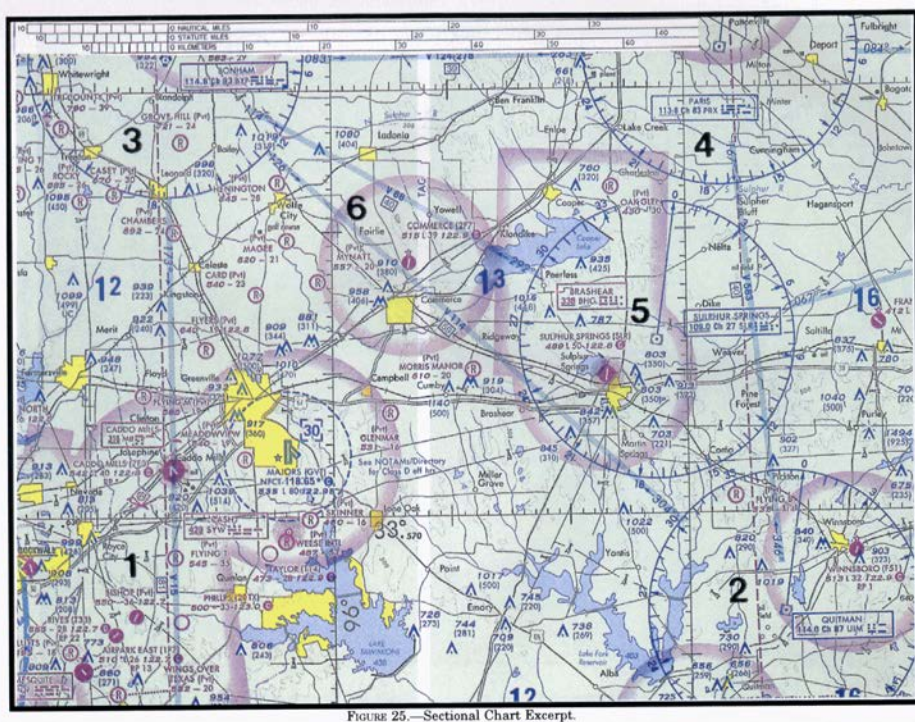
原始題號:0015339 題組:3 難易度:中

(A) 27. (參照圖5) VOR接收器(OBS)應調至何航向,以便導引飛機自Majors機場(第1區)至Quitman VORTAC(第2區)?

(如圖A58_Fig5)

(A) 101° 。(B) 108° 。(C) 281° 。

題目圖:



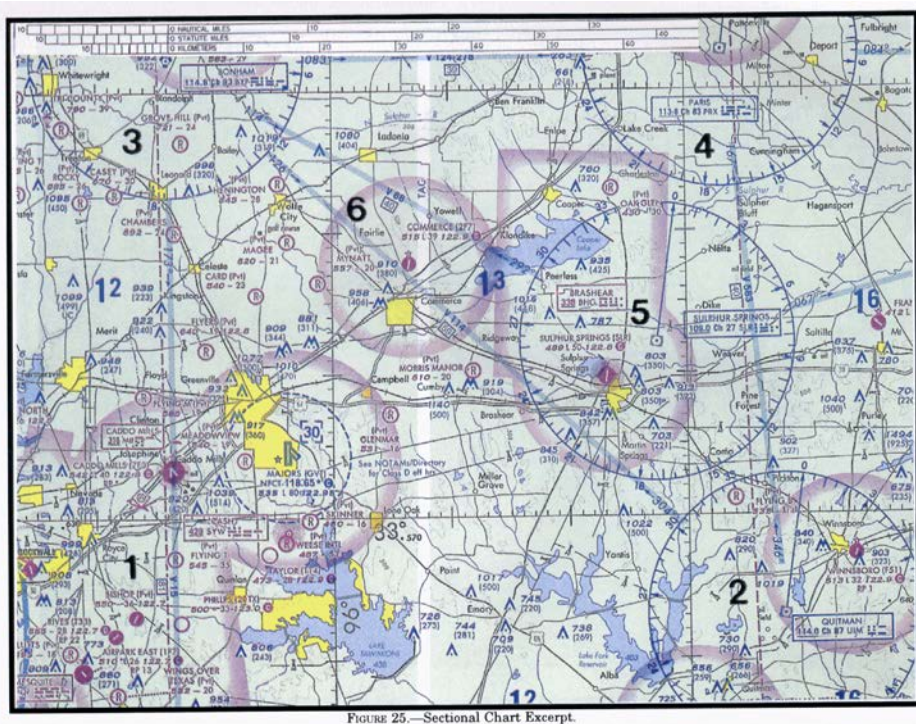
原始題號:0015340 題組:4 難易度:中

(B) 28. (參照圖5, 第1區) 在Airpark East機場東北方障礙物上方垂直隔離500呎的最低高度為何?

(如圖A58_Fig5)

(A)"1,100呎 MSL。" (B)"1,273呎 MSL。" (C)"1,283呎 MSL。"

題目圖：



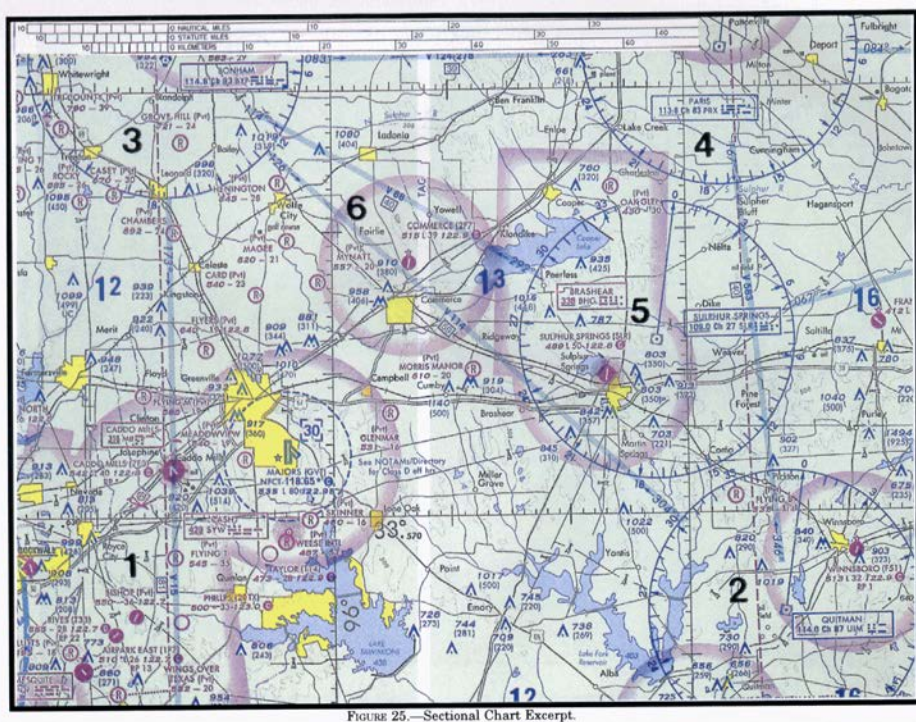
原始題號:0015341 題組:5 難易度:中

(C) 29. (參照圖5, 第2區) 在Winnsboro機場東南方障礙物上方垂直隔離500呎的最低高度為何?

(如圖A58_Fig5)

(A)823 呎MSL。 (B)"1,013呎 MSL。" (C)"1,403呎MSL。"

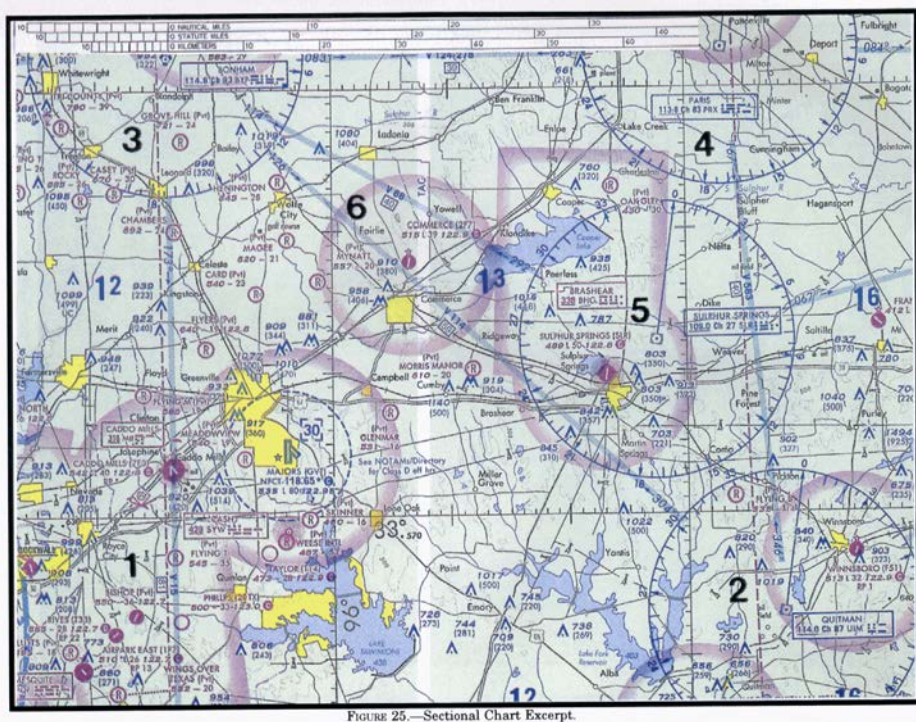
題目圖：



原始題號:0015342 題組:1 難易度:中

- (B) 30. (參照圖5)VOR調至Bonham VORTAC(第3區), 且飛機目前在Sulphur Springs鎮上空(第5區), 下列哪一個VOR指示正確?
(如圖A58_Fig5)
(A)1°。(B)7°。(C)8°。

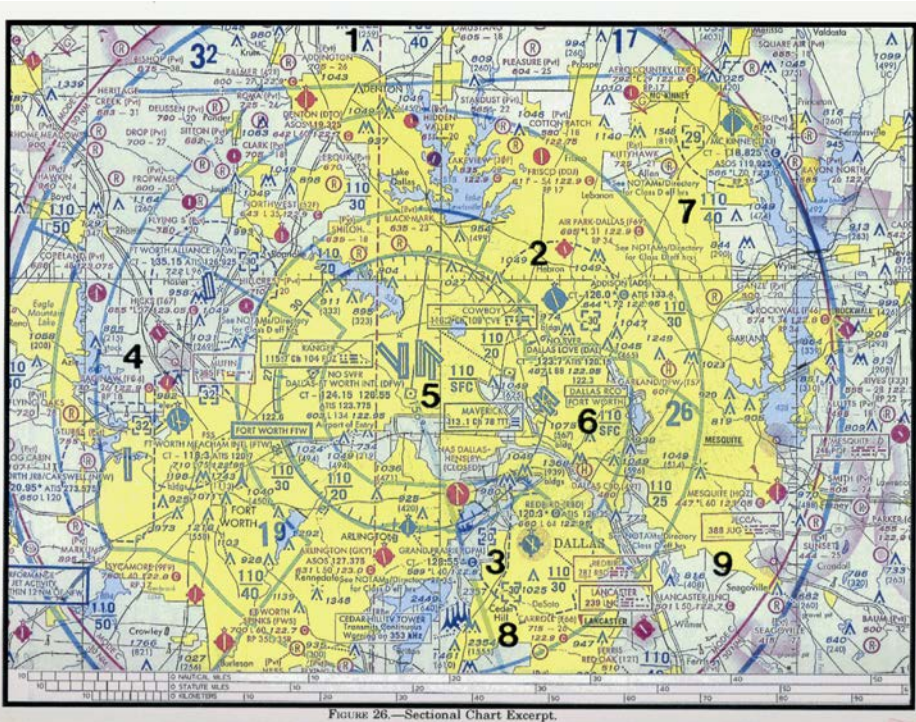
題目圖:



原始題號:0015343 題組:2 難易度:中

- (A) 31. (參照圖6, 第5區)VOR調至Dallas/ Fort Worth VORTAC, 全方位選擇器(OBS)調至253°, 窗口顯示指向電台(TO), 偏航指示器(CDI)顯示偏右, 試問飛機在VORTAC的什麼方位?
(如圖A58_Fig6)
(A)東北東。(B)北北東。(C)西南西。

題目圖:



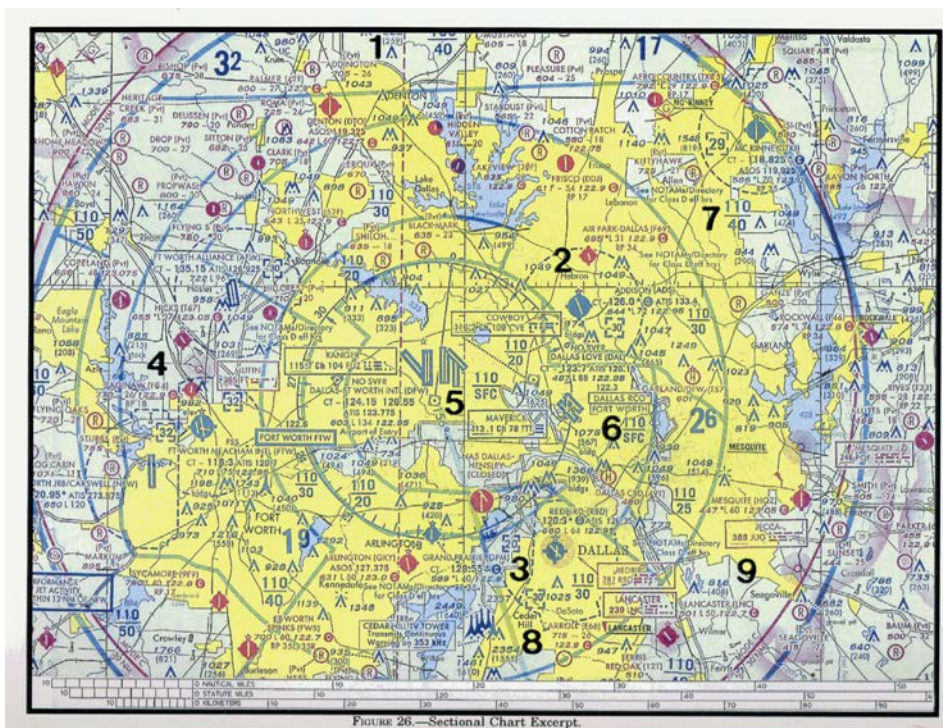
原始題號:0015344 題組:3 難易度:中

(B) 32. (參照圖6，第8區)飛越Dallas海軍航空站西南方的Cedar山丘電視轉播鐵塔最低高度需求為何？

(如圖A58_Fig6)

(A)"2,555呎MSL。" (B)"3,449 呎MSL。" (C)"3,349 呎MSL。"

題目圖：



原始題號:0015345 題組:1 難易度:中

(A) 33. (參照圖7)決定自Breckheimer(私人)機場(第1區)至Jamestown機場(第4區)的磁航向為何？

(如圖A58_Fig7)

(A)180°。 (B)188°。 (C)360°。

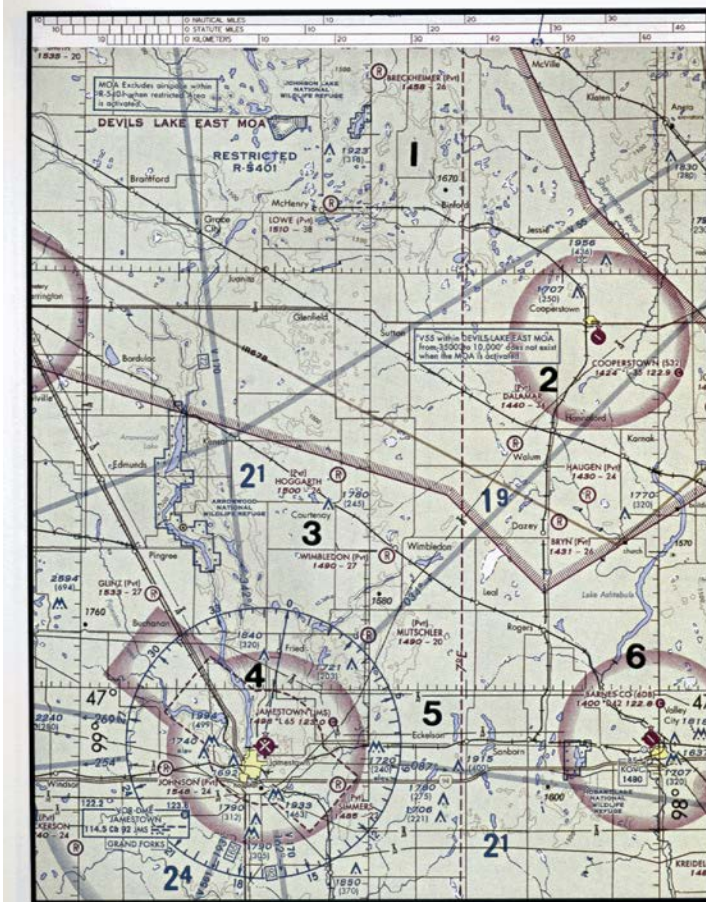


FIGURE 27.—Sectional Chart Excerpt.

(A58) ATPL直昇機基本航行學

最近更新日期：無；更新題號：無

原始題號:0015346 題組:2 難易度:中

(A) 34. (參照圖7，第2區) 決定 Cooperstown機場的概略經緯度。

(如圖A58_Fig7)

(A) 47°25' N - 98°06' W。 (B) 47°25' N - 99°54' W。 (C) 47°55' N - 98°06' W。

題目圖：

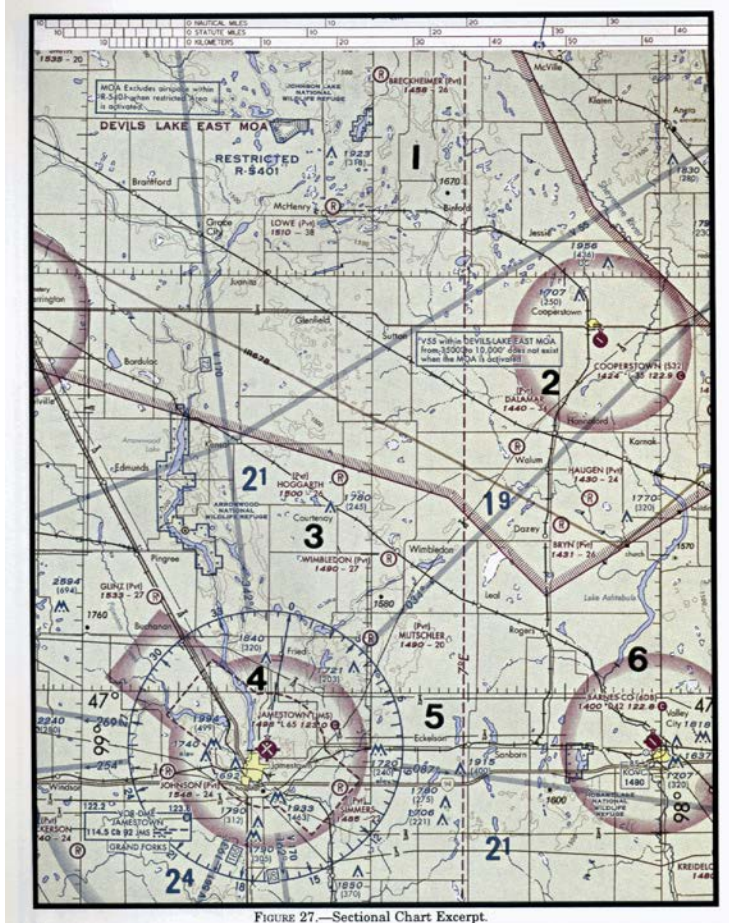


FIGURE 27.—Sectional Chart Excerpt.

原始題號:0015347 題組:1 難易度:中

(B) 35. (參照圖7，第4與第3區) VOR調至Jamestown VOR，且飛機目前在Cooperstown上空(第5區)，下列哪一個VOR指示正確？

(如圖A58_Fig7)

(A) 1。 (B) 6。 (C) 4。

題目圖：

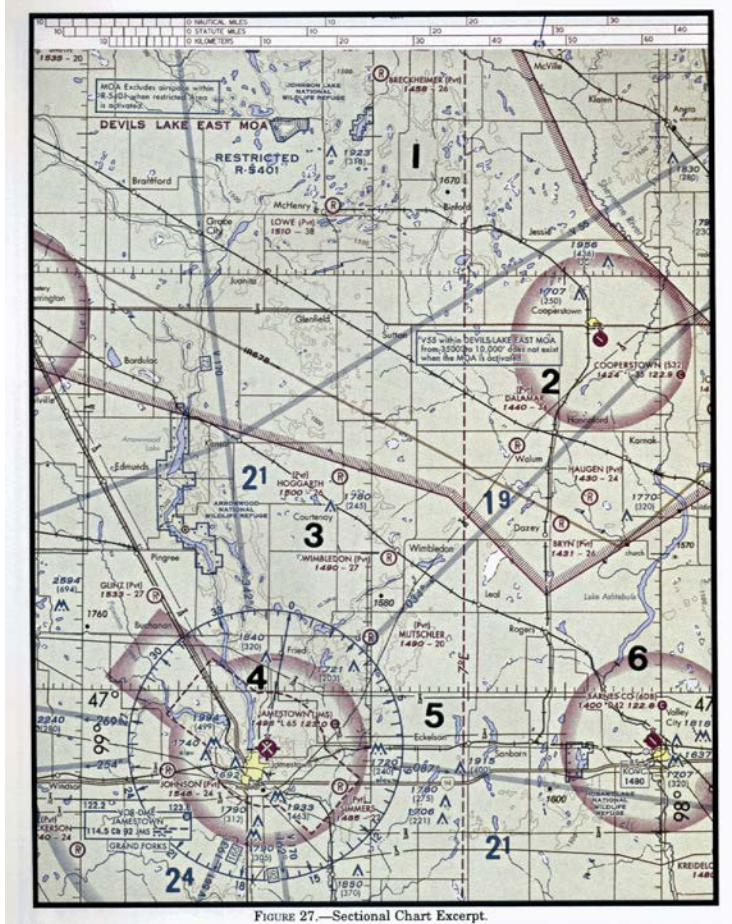


FIGURE 27.—Sectional Chart Excerpt.

原始題號:0015348 題組:1 難易度:中

- (C) 36. (參照圖9，圖示1) VOR接收器信號如圖所示，飛機相對於電台之位置為何？
(如圖A58_Fig9)
(A)北。(B)東。(C)南。

題目圖：

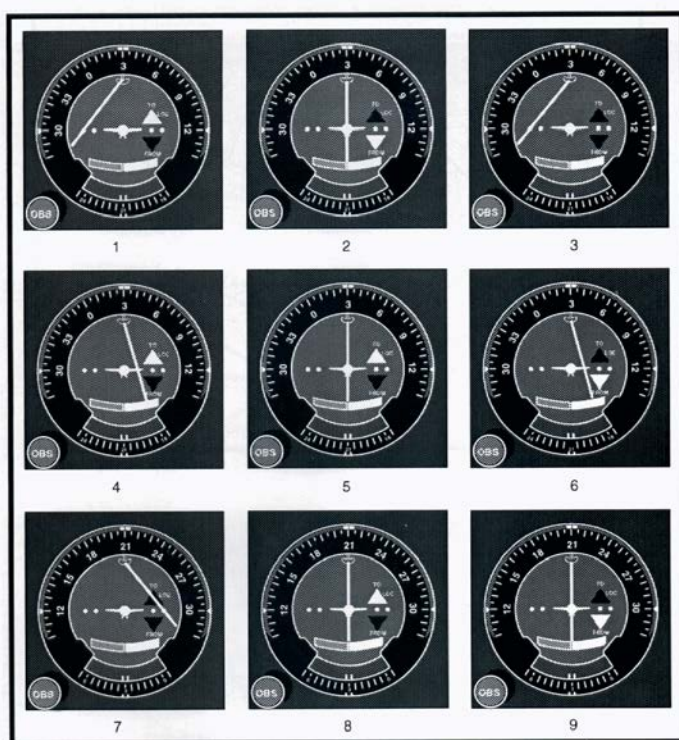
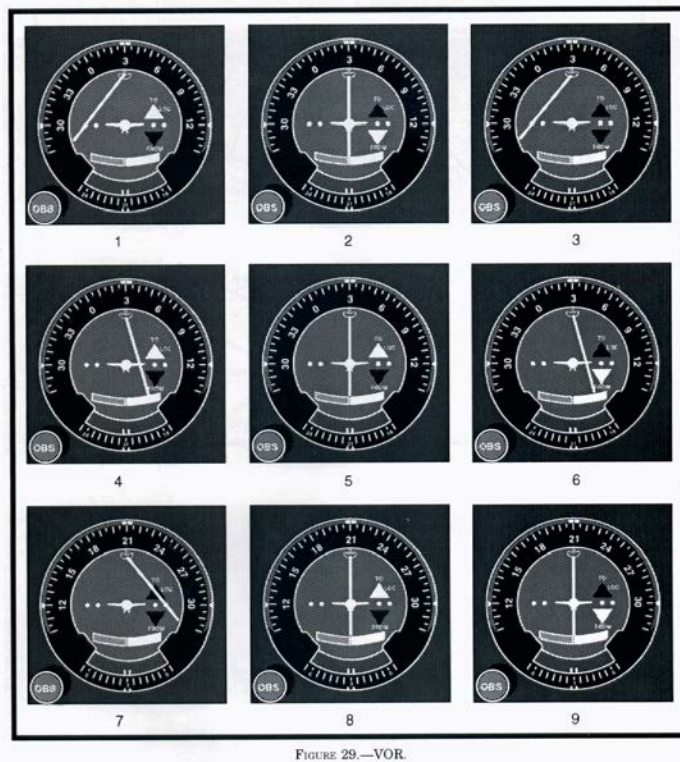


FIGURE 29.—VOR.

原始題號:0015349 題組:2 難易度:中

- (B) 37. (參照圖9，圖示3) VOR接收器信號如圖所示，飛機相對於電台之位置為何?
(如圖A58_Fig9)
(A)東。(B)東南。(C)西。

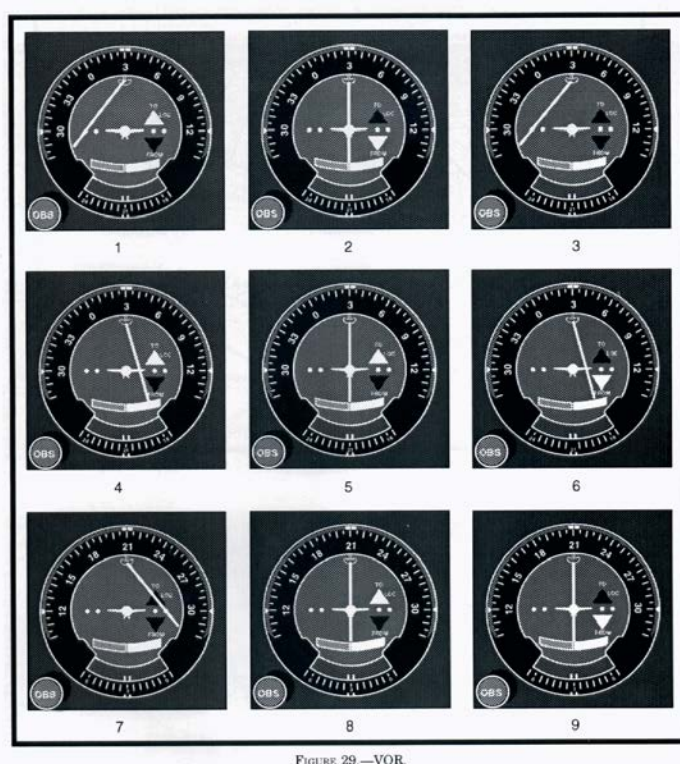
題目圖：



原始題號:0015350 題組:3 難易度:中

- (A) 38. (參照圖9，圖示8) VOR接收器信號如圖所示，飛機通過的輻向為何?
(如圖A58_Fig9)
(A)030°。(B)210°。(C)300°。

題目圖：



原始題號:0015351 題組:2 難易度:中

- (A) 39. (參照圖13，離場點) Georgetown機場 (Q61)，離場時間：0637，你的飛行高度高空風測報(FD)：1008，空速：8kts。0755時，飛機應該在
(如圖A58_Fig13)
(A) Auburn機場(AUN)上空。(B) Auburn城鎮上空。(C)在Gargen Valley城鎮偏西方位置。

題目圖：



FIGURE 61—Sectional Chart Excerpt

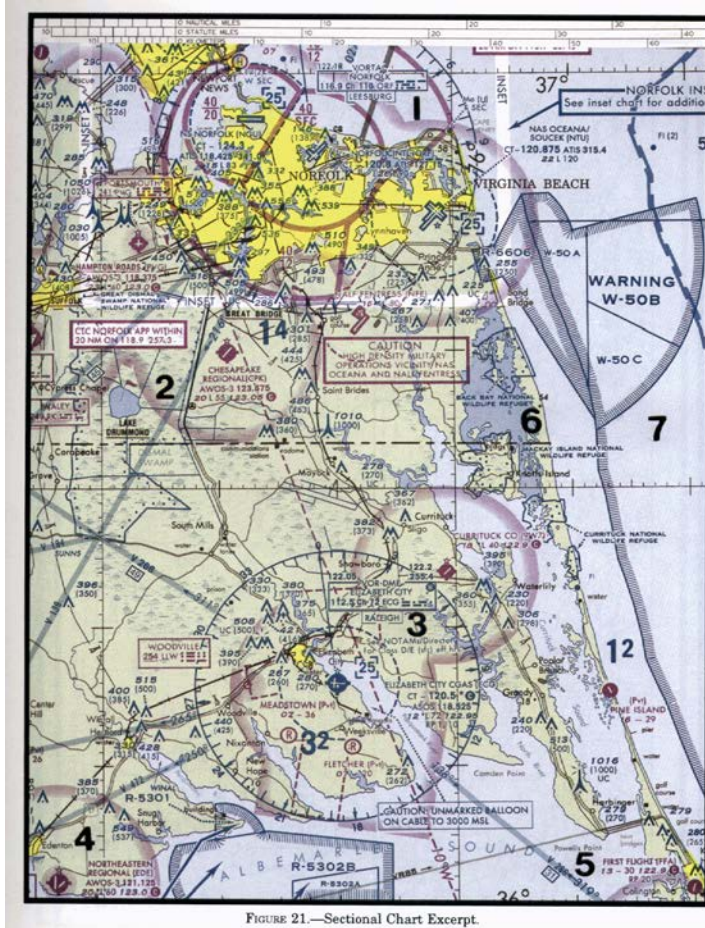
(A58) ATPL直昇機基本航行學

最近更新日期：無；更新題號：無

原始題號:0015313 題組:1 難易度:中

- (C) 1. (Refer to Figure 1.) Determine the magnetic course from First Flight Airport (area 5) to Hampton Roads Airport (area 2). (如圖A58_Fig1)
(A)141°. (B)321°. (C)331°.

題目圖：



原始題號:0015314 題組:2 難易度:中

- (C) 2. (Refer to Figure 1.) En route to First Flight Airport (area 5), your flight passes over Hampton Roads Airport (Area 2) at 1456 and then over Chesapeake Municipal at 1501. At what time should your flight arrive at First Flight?" (如圖A58_Fig1)
(A)1516. (B)1521 (C)1526

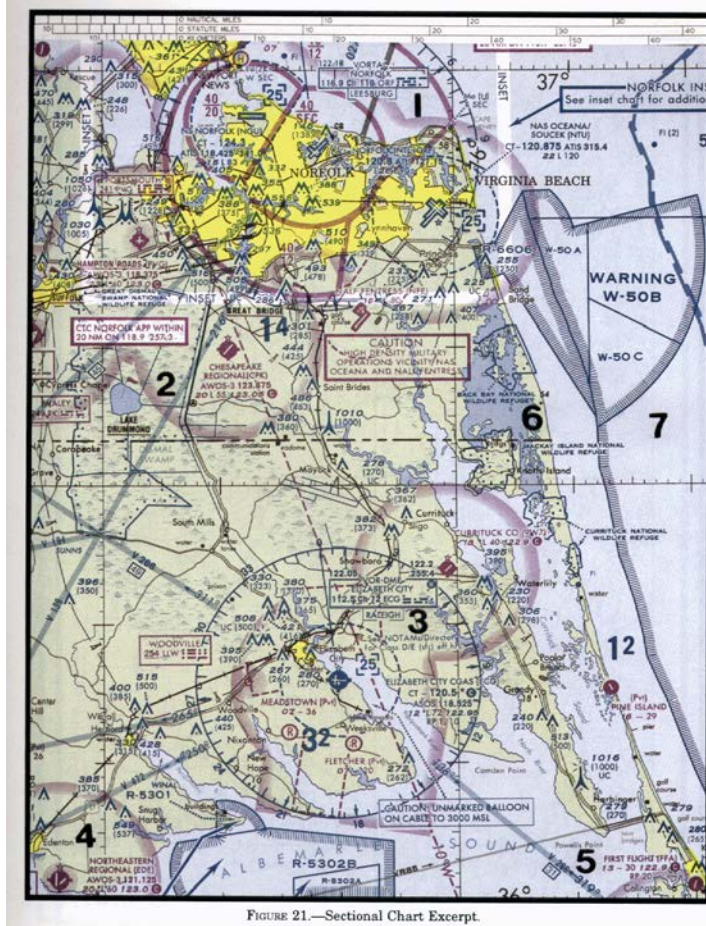
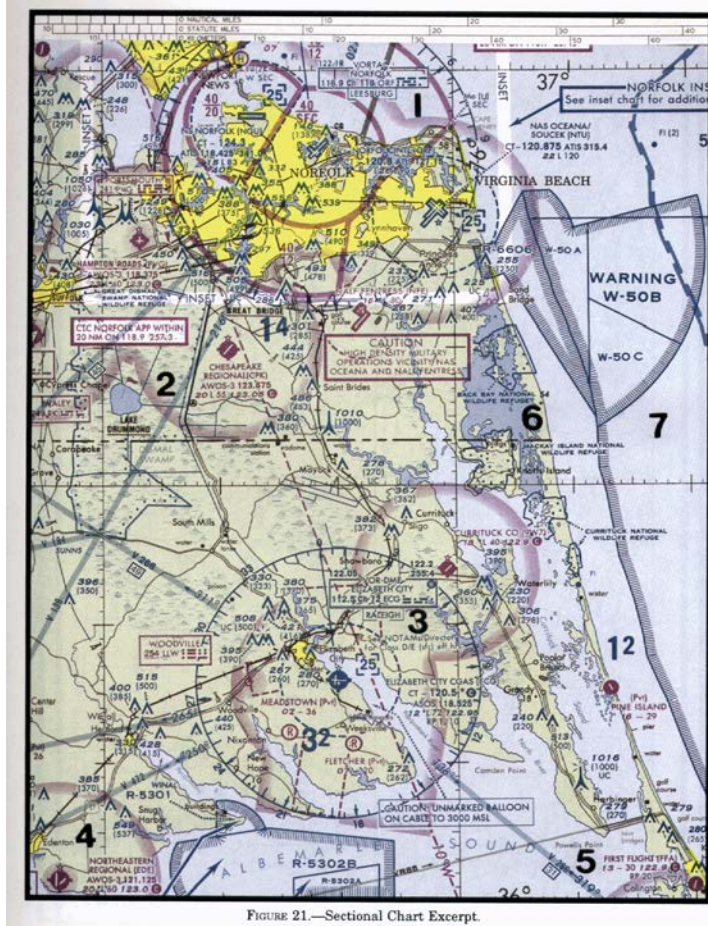


FIGURE 21.—Sectional Chart Excerpt.

原始題號:0015315 題組:3 難易度:中

- (B) 3. (Refer to Figure 1.) What is your approximate position on low altitude airway Victor 1, southwest of Norfolk (area 1), if the VOR receiver indicates you are on the 340° radial of Elizabeth City VOR (area 3)?" (如圖A58_Fig1)
- (A) 15 nautical miles from Norfolk VORTAC. (B) 18 nautical miles from Norfolk VORTAC. (C) 23 nautical miles from Norfolk VORTAC.



原始題號:0015316 題組:4 難易度:中

- (C) 4. (Refer to Figure 1, area 2.) The flag symbol at lake Drummond represents a" (如圖A58_Fig1)
- (A)compulsory reporting point for Norfolk Class C airspace. (B)compulsory reporting point for Hampton Roads Airport. (C)visual checpoint used to identify position for initial callup to Norfolk Approach Control.

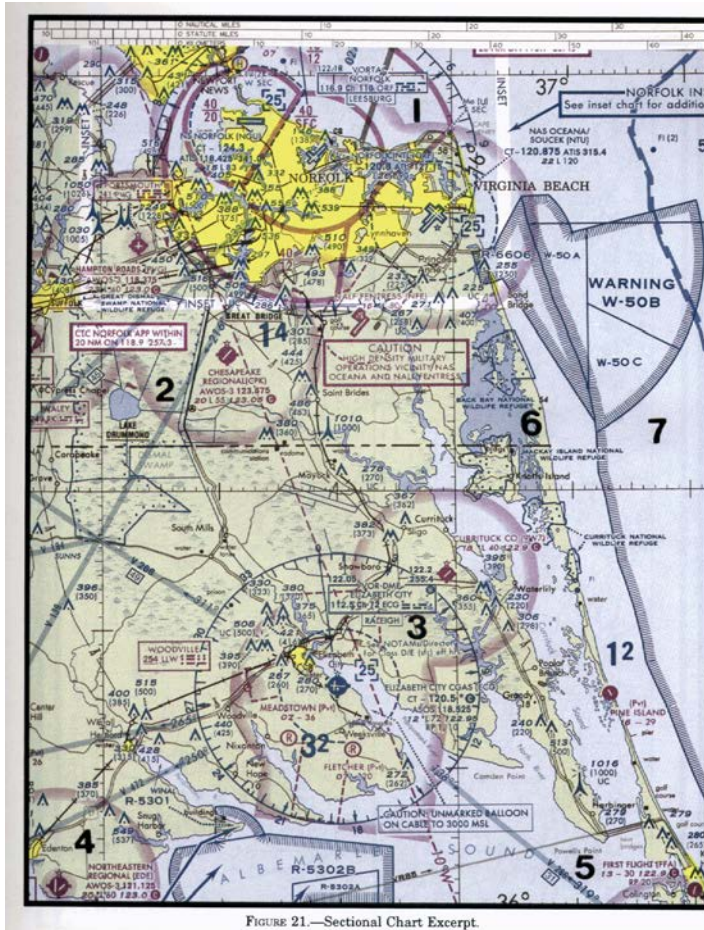
題目圖：



原始題號:0015317 題組:6 難易度:中

- (A) 5. (Refer to Figure 1, area 3.) Determine the approximate latitude and longitude of Currituck County Airport." (如圖A58_Fig1)
 (A) $36^{\circ}24'N$ - $76^{\circ}01'W$. (B) $36^{\circ}48'N$ - $76^{\circ}01'W$. (C) $47^{\circ}48'N$ - $75^{\circ}58'W$.

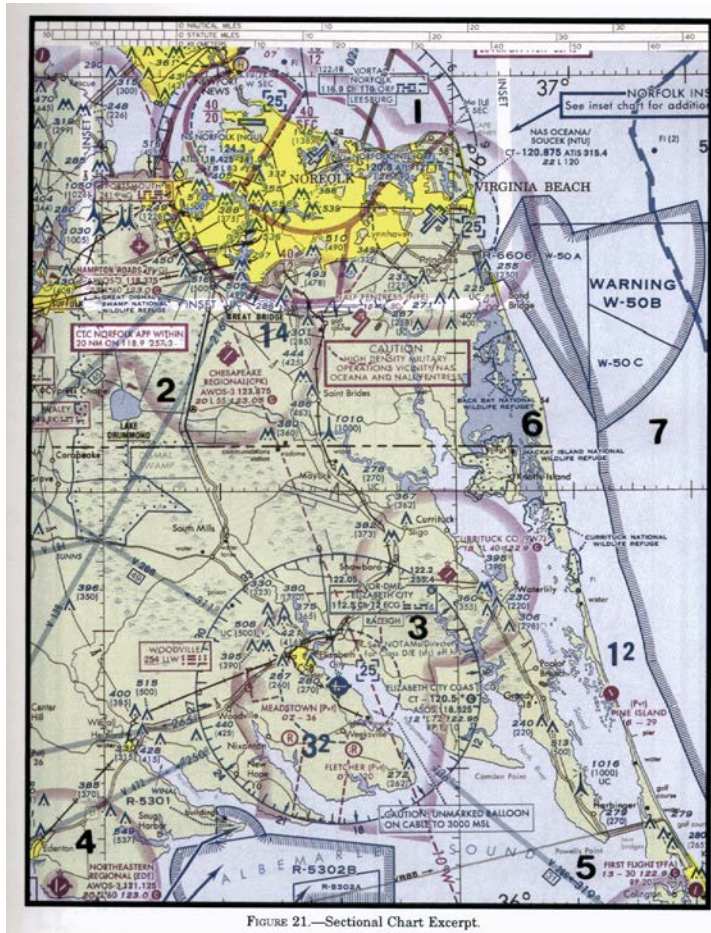
題目圖：



原始題號:0015318 題組:8 難易度:中

- (A) 6. (Refer to Figure 1, area 5.) The CAUTION box denotes what hazard to aircraft?" (如圖A58_Fig1)
- (A)"Unmarked balloon on cable to 3,000 feet MSL." (B)"Unmarked balloon on cable to 3,000 feet AGL." (C)Unmarked blimp hangars at 300 feet MSL.

題目圖：



原始題號:0015319 題組:1 難易度:中

- (B) 7. (Refer to Figure 2.) The terrain elevation of the light tan area between Minot (area 1) and Audubon Lake (area 2) varies from(如圖A58_Fig2)
- (A)"sea level to 2,000 feet MSL." (B)"2,000 feet to 2,500 feet MSL." (C)"2,000 feet to 2,700 feet MSL."

題目圖：

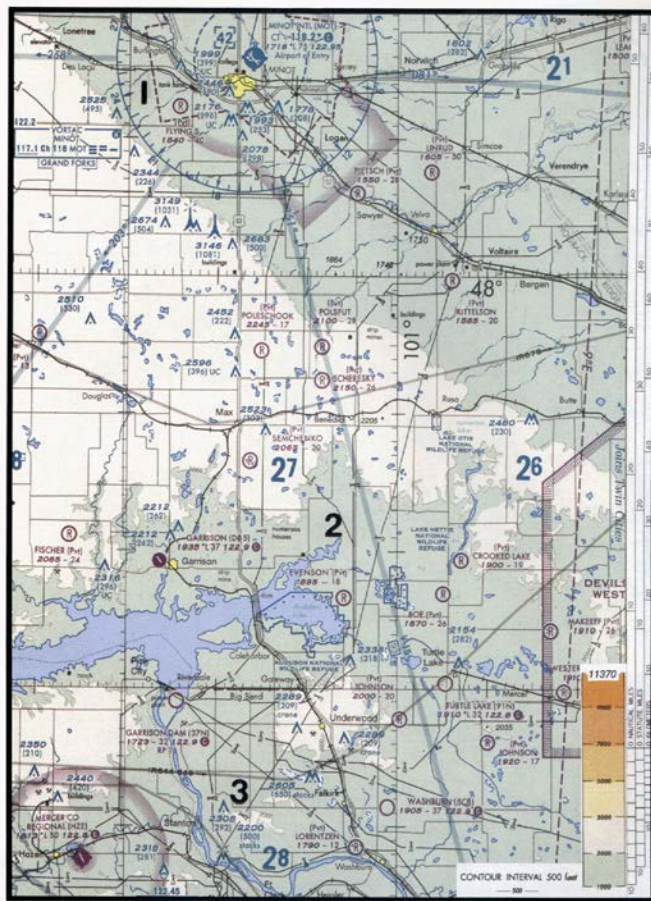


FIGURE 22—Sectional Chart Excerpt.

原始題號:0015320 題組:2 難易度:中

- (B) 8. (Refer to Figure 2.) Which public use airports depicted are indicated as having fuel?(如圖A58_Fig2)
- (A)Minot Intl. (area 1) and Garrison (area 2). (B)Minot Intl. (area 1) and Mercer County Regional Airport (area 3). (C)Mercer County Regional Airport (area 3) and Garrison (area 2).

題目圖：

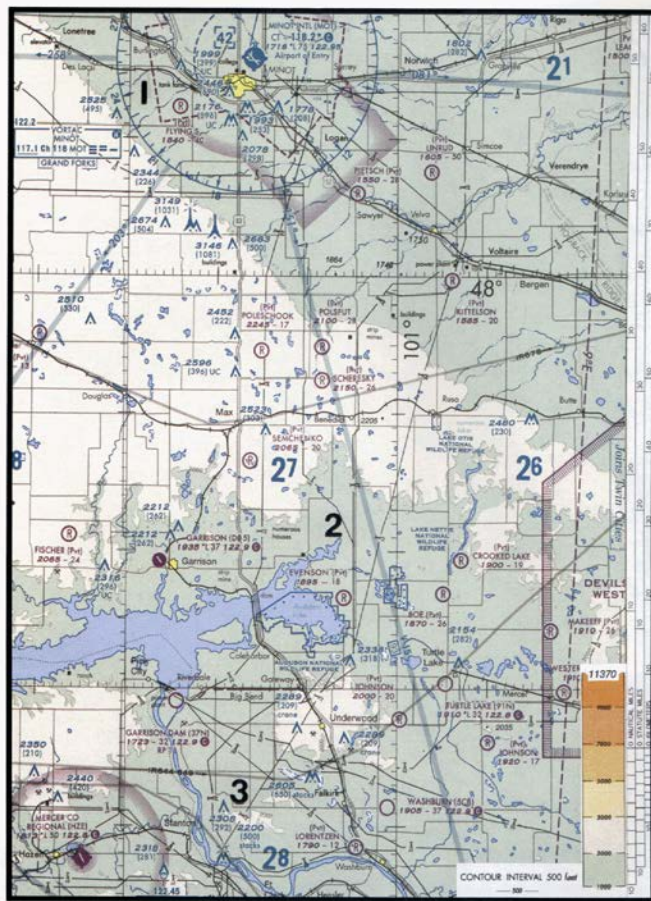


FIGURE 22—Sectional Chart Excerpt.

原始題號:0015321 題組:3 難易度:中

- (C) 9. (Refer to Figure 2.) Determine the magnetic heading for a flight from Mercer County Regional Airport (area 3) to Minot International (area 1). The wind is from 330° at 25 knots, the true airspeed is 100 knots, and the magnetic variation is 10° east." (如圖A58_Fig2)
- (A) 002° (B) 012° (C) 352°

題目圖：

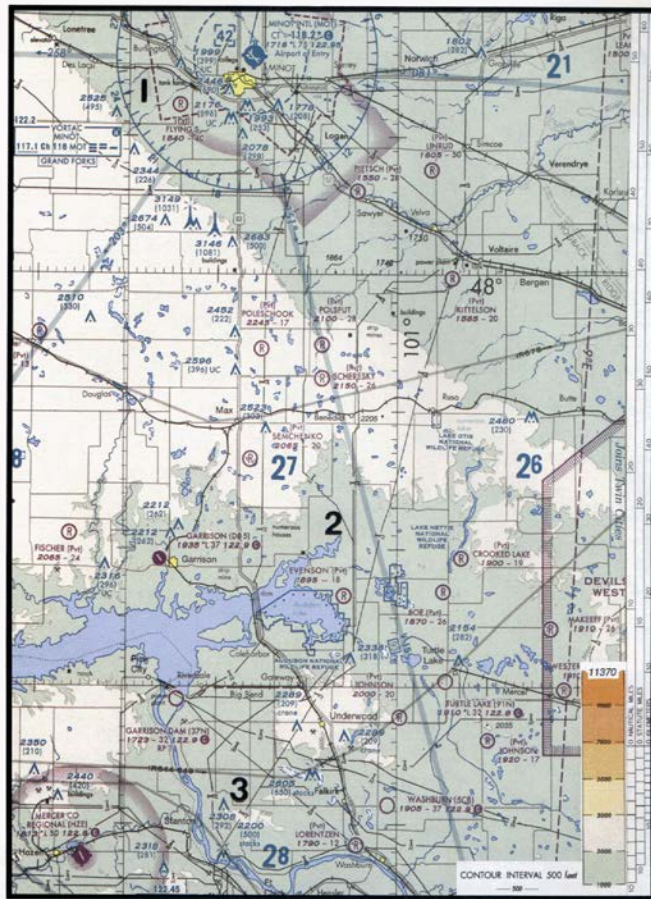


FIGURE 22.—Sectional Chart Excerpt.

原始題號:0015322 題組:4 難易度:中

- (B) 10. (Refer to Figure 2.) What course should be selected on the omnibearing selector (OBS) to make a direct flight from Mercer County Regional Airport (area 3) to the VORTAC (area 1) with TO indication?(如圖A58_Fig2)
- (A)001° (B)359° (C)179°

題目圖：

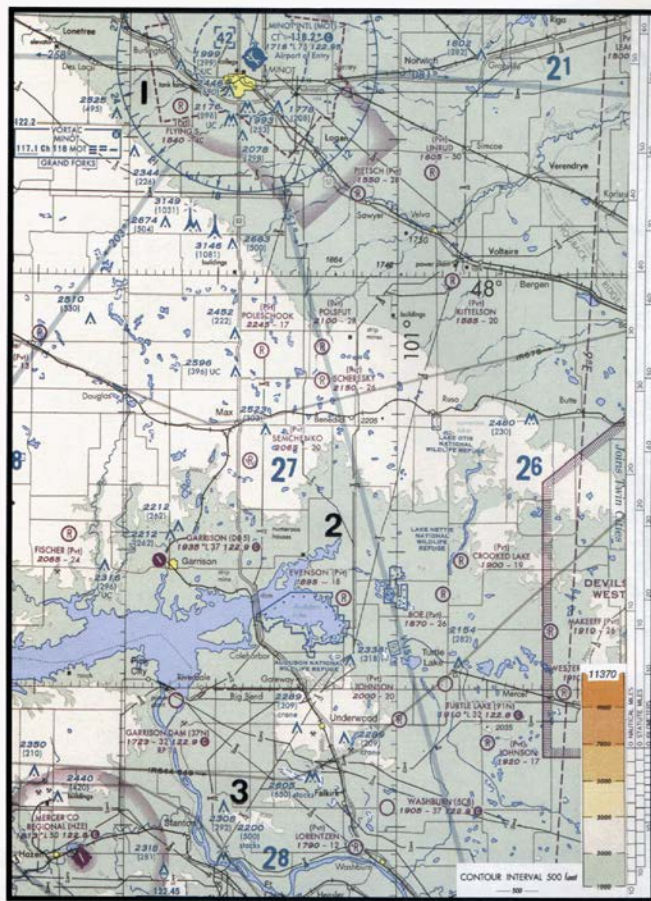


FIGURE 22.—Sectional Chart Excerpt.

原始題號:0015323 題組:5 難易度:中

- (B) 11. (Refer to Figure 2, area 2.) Which airport is located at approximately 47°39' 30" N latitude and 100°53' 00" W longitude? (如圖A58_Fig2)
- (A) Linrud. (B) Crooked Lake. (C) Johnson.

題目圖：

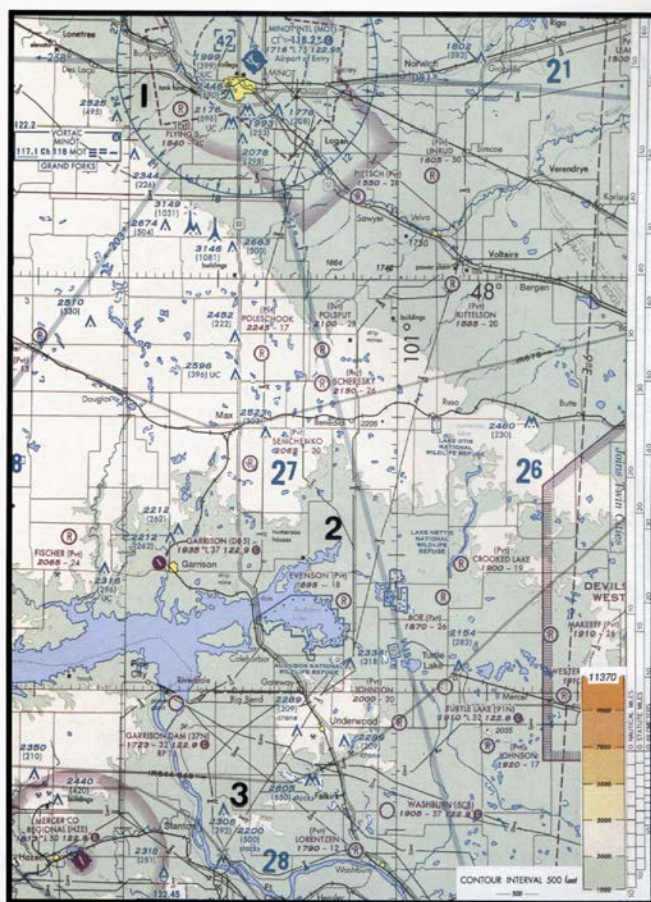


FIGURE 22.—Sectional Chart Excerpt.

原始題號:0015324 題組:6 難易度:中

- (C) 12. (Refer to Figure 2, area 3.) Which airport is located at approximately $47^{\circ}21'N$ latitude and $101^{\circ}01'W$ longitude? (如圖A58_Fig2)
(A) Underwood. (B) Evenson. (C) Washburn.

題目圖：

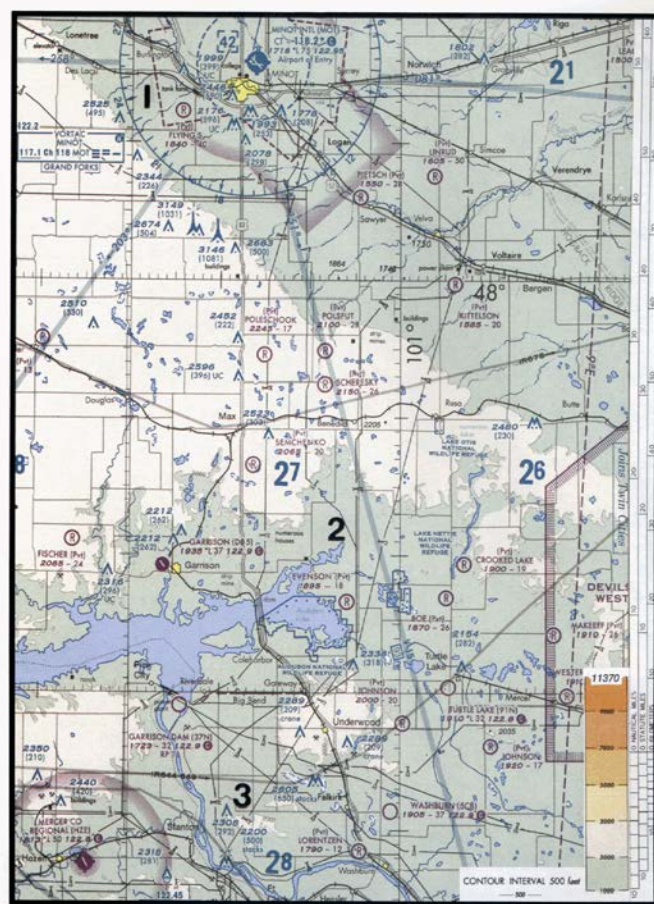


FIGURE 22—Sectional Chart Excerpt.

原始題號:0015325 題組:7 難易度:中

- (B) 13. (Refer to Figure 2, area 3.) Determine the approximate latitude and longitude of Shoshone County Airport. (如圖A58_Fig2)
(A) $47^{\circ}02'N - 116^{\circ}11'W$. (B) $47^{\circ}33'N - 116^{\circ}11'W$. (C) $47^{\circ}32'N - 116^{\circ}41'W$.

題目圖：

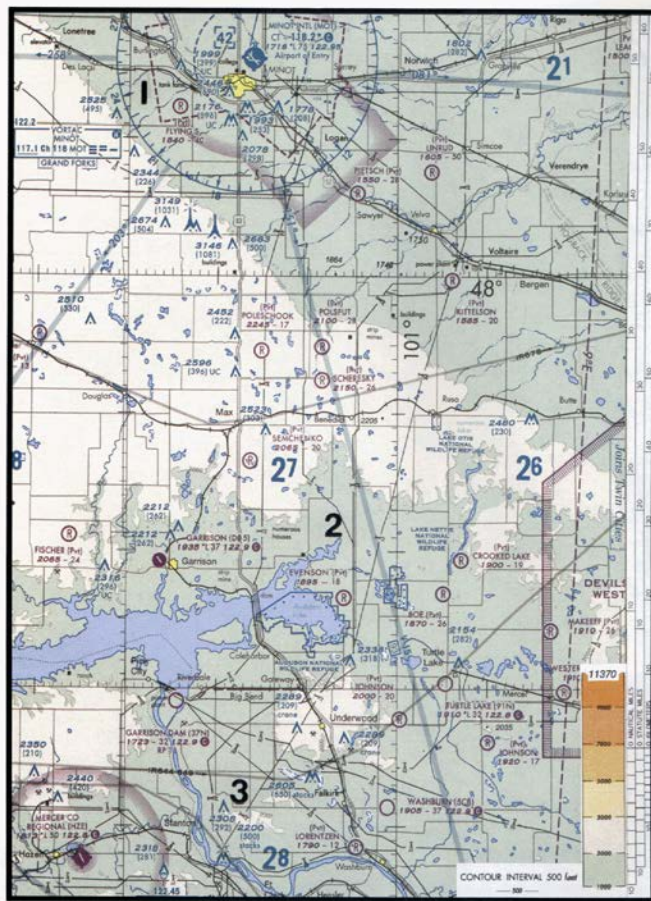
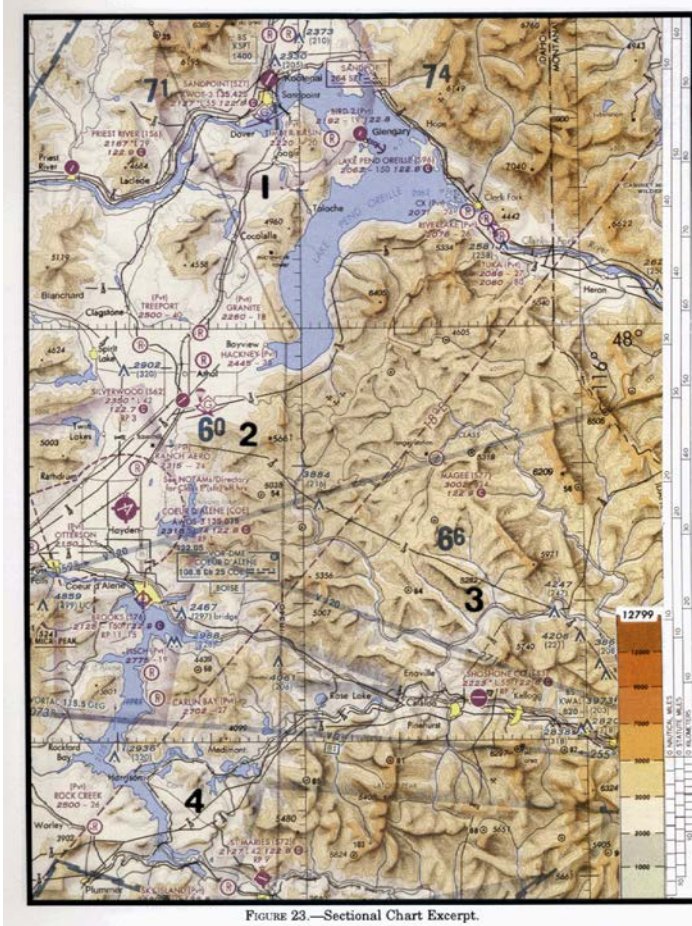


FIGURE 22.—Sectional Chart Excerpt.

原始題號:0015326 題組:2 難易度:中

- (C) 14. (Refer to Figure 3.) Determine the estimated time en route for a flight from Priest River Airport (area 1) to Shoshone County Airport (area 3). The wind is from 030 at 12 knots and the true airspeed is 95 knots. Add 2 minutes for climb-out. (如圖A58_Fig3)
- (A)29 minutes. (B)27 minutes. (C)31 minutes.



原始題號:0015327 題組:3 難易度:中

- (B) 15. (Refer to Figure 3.) What is the estimated time en route from St. Maries Airport (area 4) to Priest River Airport (area 1)? The wind is from 300° at 14 knots and the true airspeed is 90 knots. Add 3 minutes for climb-out. (如圖A58_Fig3)
- (A)38 minutes. (B)43 minutes. (C)48 minutes.

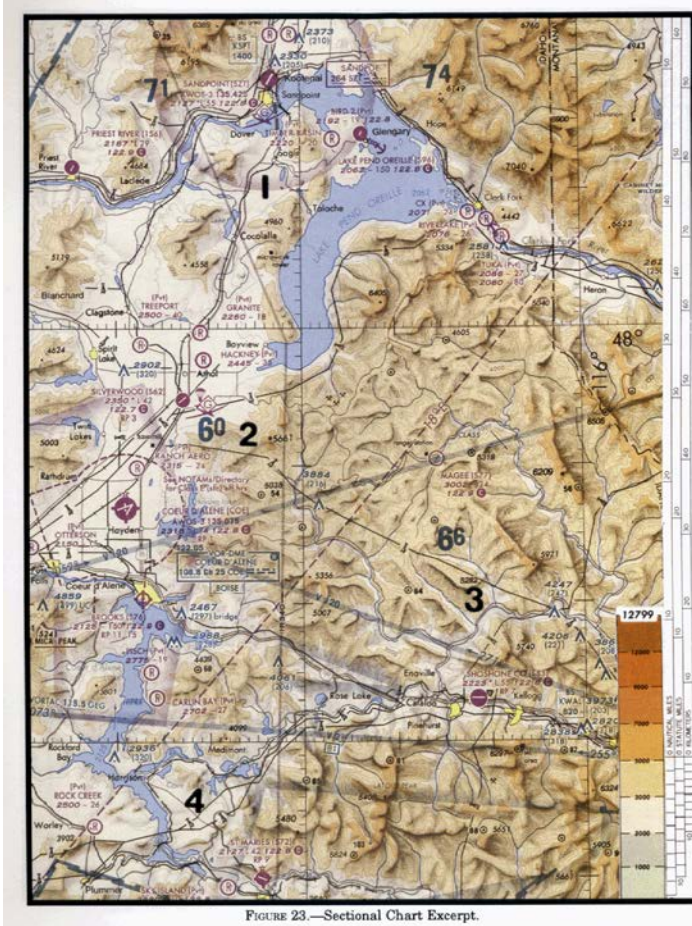
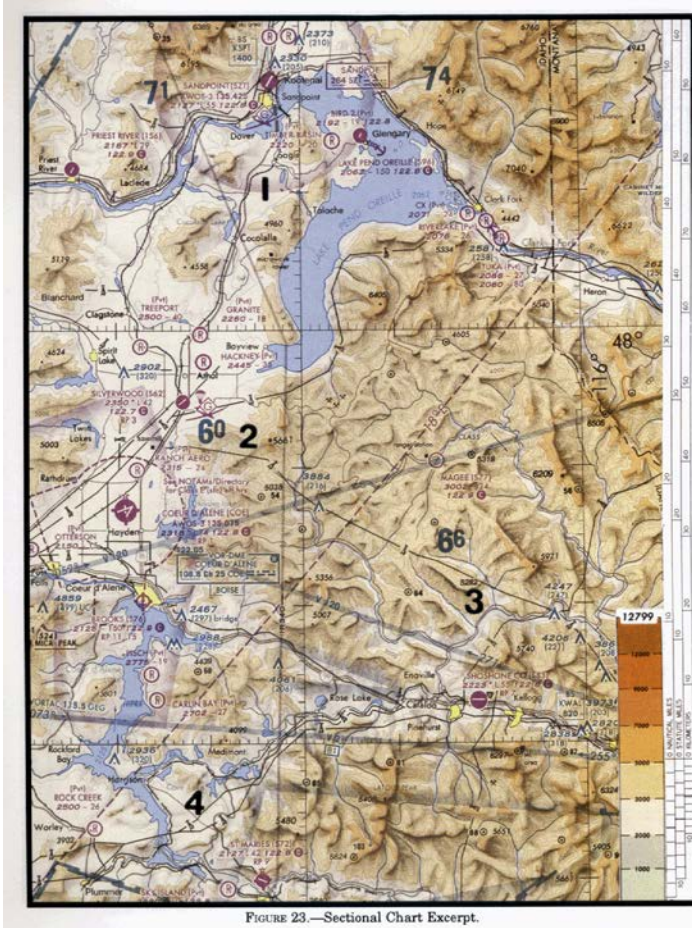


FIGURE 23.—Sectional Chart Excerpt.

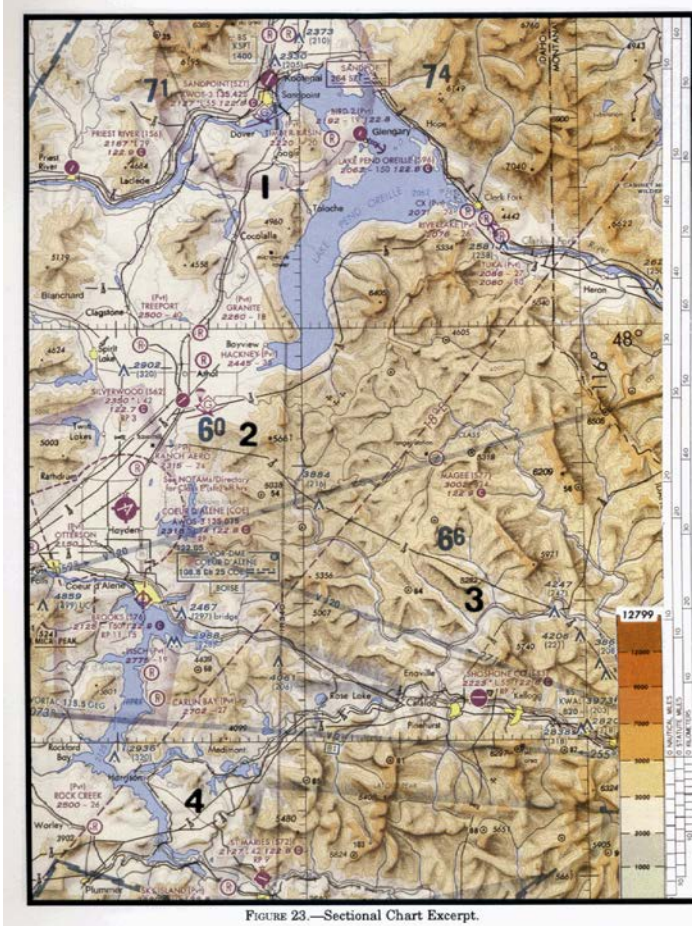
原始題號:0015328 題組:4 難易度:中

- (C) 16. (Refer to Figure 3.) What is the estimated time en route from Alendale County Airport (area 1) to Claxton-Evans County Airport (area 2)? The wind is from 100° at 18 knots and the true airspeed is 115 knots. Add 2 minutes for climb-out. (如圖A58_Fig3)
- (A)33 minutes. (B)27 minutes. (C)30 minutes.



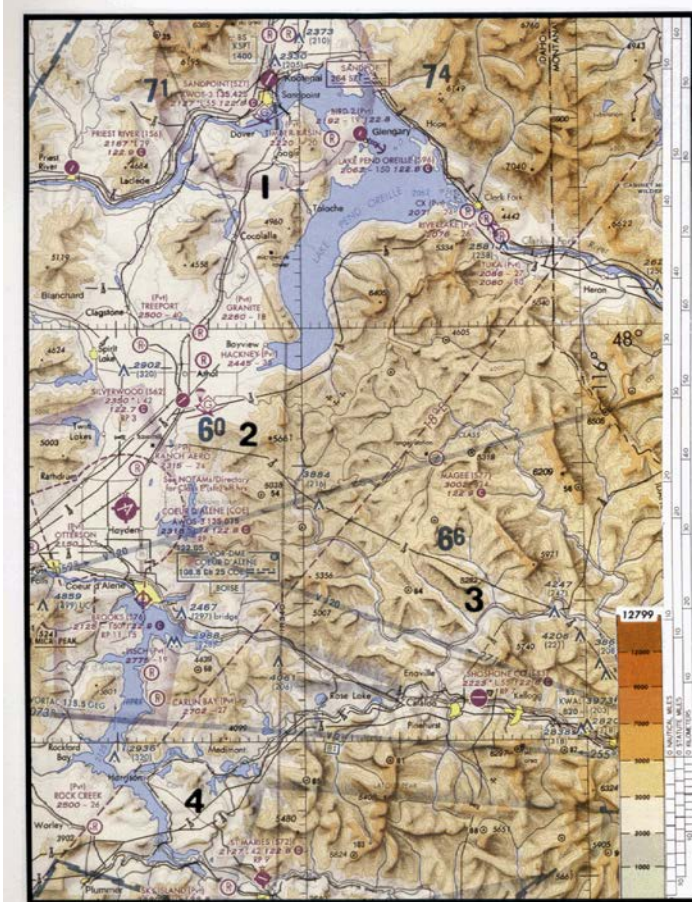
原始題號:0015329 題組:5 難易度:中

- (A) 17. (Refer to Figure 3.) Determine the magnetic heading for a flight from Sandpoint Airport (area 1) to St. Maries Airport (area 4). The wind is from 215 at 25 knots and the true airspeed is 125 knots. (如圖A58_Fig3)
- (A)169° (B)349° (C)187°



原始題號:0015330 題組:6 難易度:中

- (A) 18. (Refer to Figure 3.) What is the magnetic heading for a flight from Priest River Airport (area 1) to Shoshone County Airport (area 3)? The wind is from 030° at 12 knots and the true airspeed is 95 knots. (如圖A58_Fig3)
- (A) 118° (B) 143° (C) 136°



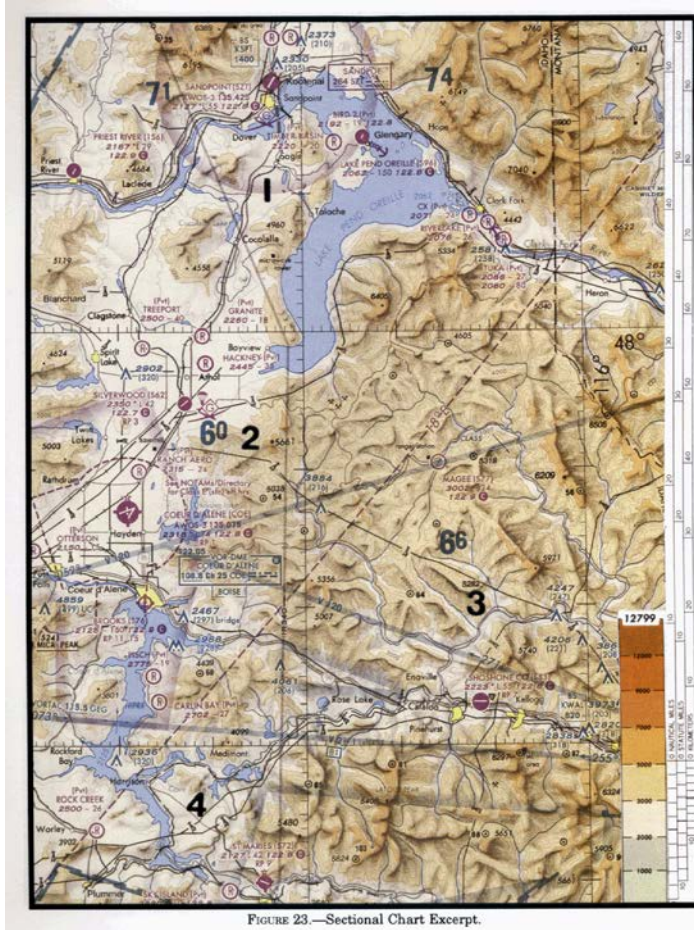
(A58) ATPL直昇機基本航行學

最近更新日期：無；更新題號：無

原始題號:0015331 題組:7 難易度:中

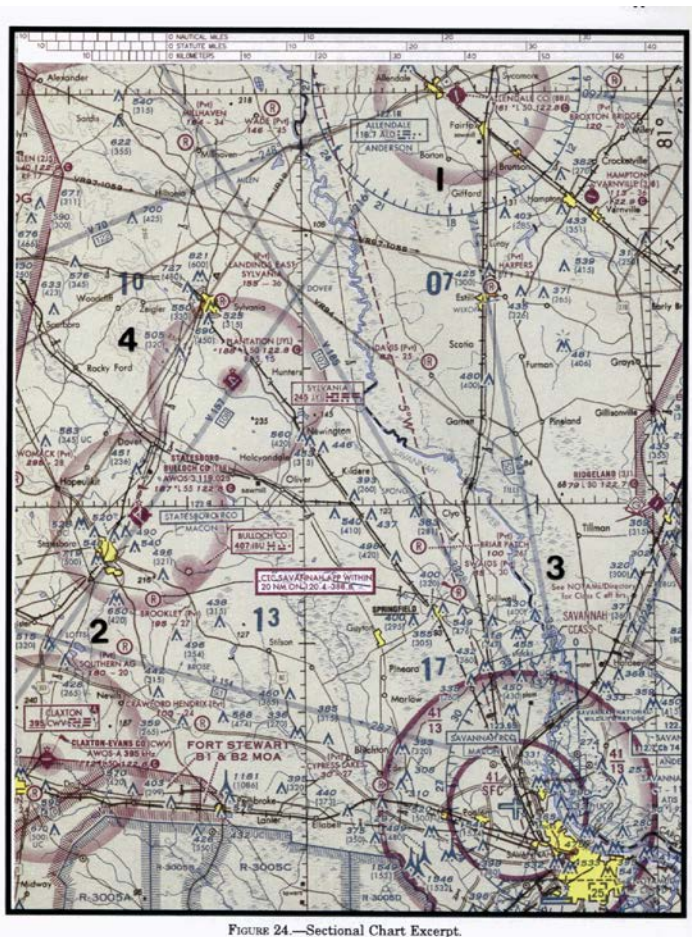
- (C) 19. (Refer to Figure 3.) Determine the magnetic heading for a flight from St. Maries Airport (area 4) to Priest River Airport (area 1). The wind is from 340° at 10 knots and the true airspeed is 90 knots. (如圖A58_Fig3)
(A)345° (B)320° (C)327°

題目圖：



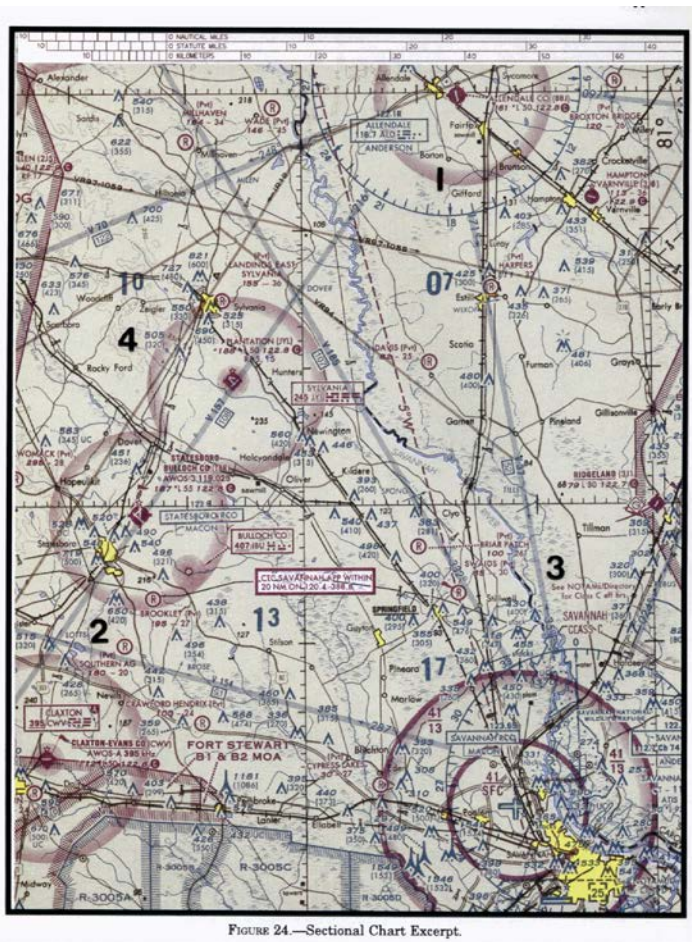
原始題號:0015332 題組:1 難易度:中

- (C) 20. (Refer to Figure 4.) The flag symbols at Statesboro Bullock County Airport, Claxton-Evans County Airport, and Ridgeland Airport are" (如圖A58_Fig4)
(A)outer boundaries of Savannah Class C airspace. (B)airports with special traffic patterns. (C)visual checkpoint to identify position for initial callup prior to entering Savannah Class C airspace.



原始題號:0015333 題組:2 難易度:中

- (B) 21. (Refer to Figure 4.) What is the estimated time en route for a flight from Claxton-Evans County Airport (area 2) to Hampton Varnville Airport (area 1)? The wind is from 290° at 18 knots and the true airspeed is 85 knots. Add 2 minutes for climb-out(如圖A58_Fig4)
- (A)35 minutes. (B)39 minutes. (C)44 minutes.



原始題號:0015334 題組:3 難易度:中

- (C) 22. (Refer to Figure 4.) While en route on Victor 185, a flight crosses the 248° radial of Allendale VOR at 0935 and then crosses the 216° radial of Allendale VOR at 1000. What is the estimated time of arrival at Savannah VORTAC? (如圖 A58_Fig4)
- (A) 1023. (B) 1036. (C) 1028.

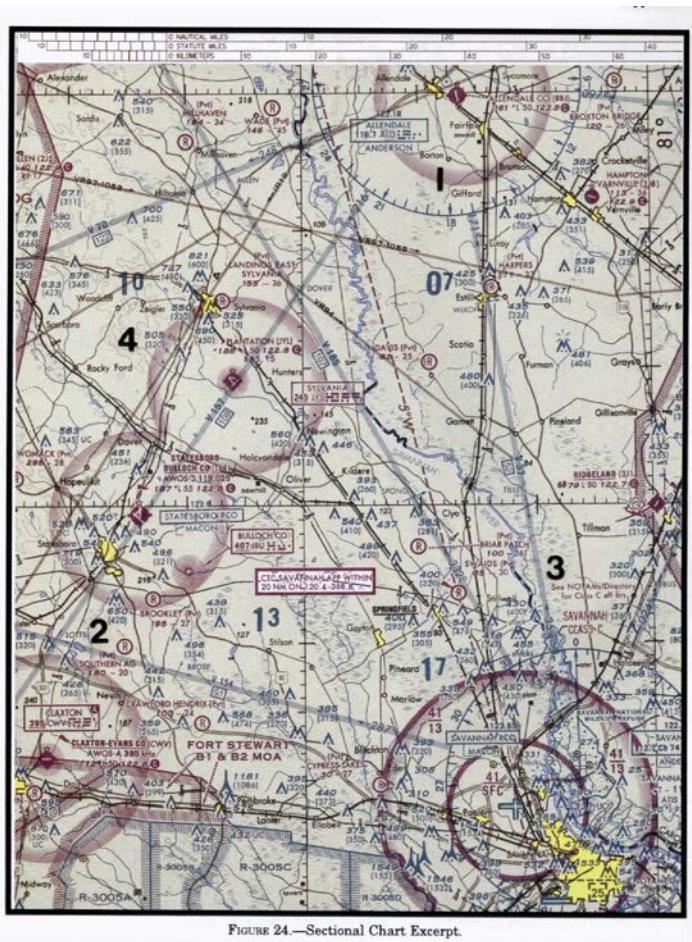


FIGURE 24.—Sectional Chart Excerpt.

原始題號:0015335 題組:4 難易度:中

- (A) 23. (Refer to Figure 4.) Determine the magnetic heading for a flight from Allendale County Airport (area 1) to Claxton-Evans County Airport (area 2). The wind is from 090° at 16 knots and the true airspeed is 90 knots. (如圖A58_Fig4)
- (A) 208° (B) 230° (C) 212°

題目圖：

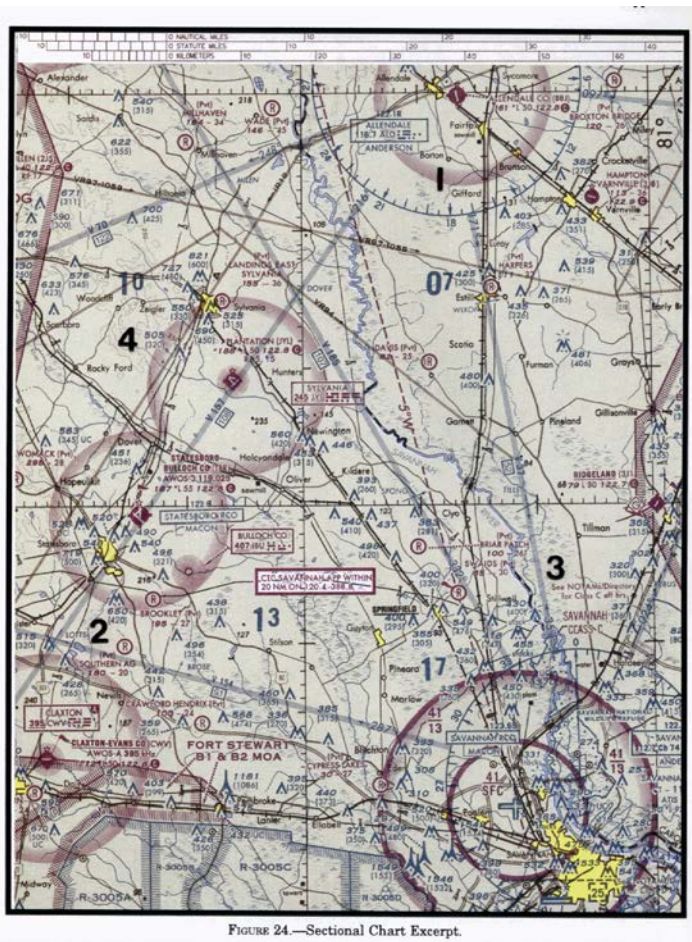


FIGURE 24.—Sectional Chart Excerpt.

原始題號:0015336 題組:5 難易度:中

- (B) 24. (Refer to Figure 4.) On what course should the VOR receiver (OBS) be set to navigate direct from Hampton Vamville Airport (area 1) to Savannah VORTAC (area 3)? (如圖A58_Fig4)
- (A) 003° (B) 183° (C) 200°

題目圖：



FIGURE 24.—Sectional Chart Excerpt.

原始題號:0015337 題組:1 難易度:中

- (A) 25. (Refer to Figure 5.) Determine the magnetic course from Airpark East Airport (area 1) to Winsboro Airport (area 2). Magnetic variation is $6^{\circ}30' \text{ E}$. (如圖 A58_Fig5)
- (A) 075° . (B) 082° . (C) 091° .

題目圖：

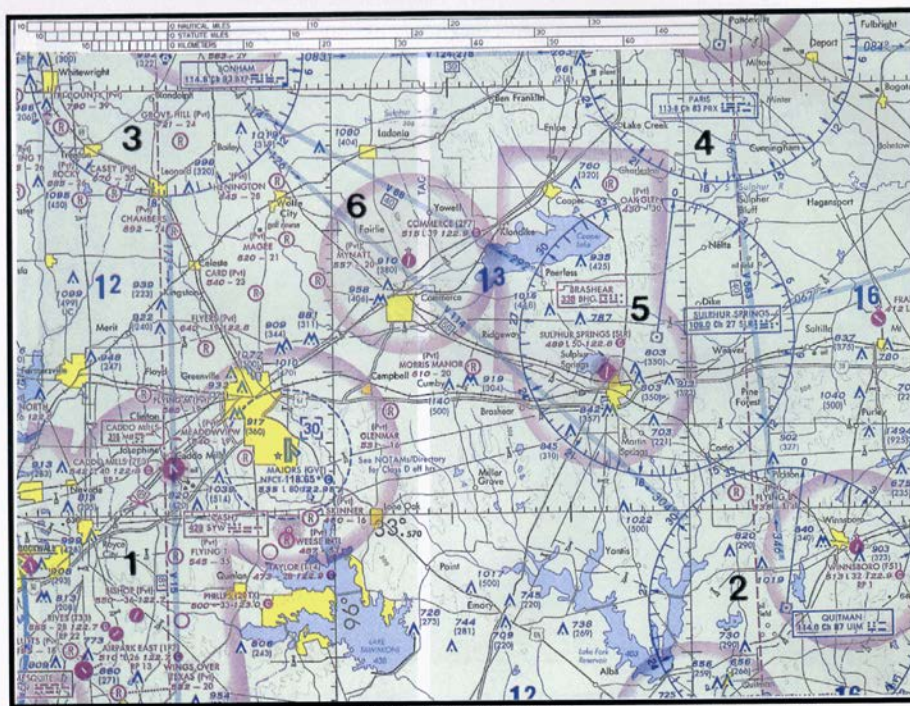


FIGURE 25.—Sectional Chart Excerpt.

原始題號:0015338 題組:2 難易度:中

- (B) 26. (Refer to Figure 5.) What is the approximate position of the aircraft if the VOR receivers indicate the 245° radial of Sulphur Springs VOR-DME (area 5) and the 140° radial of Bonham VORTAC (area 3)? (如圖A58_Fig5)
 (A) Meadowview Airport. (B) Glenmar Airport. (C) Majors Airport.

題目圖：

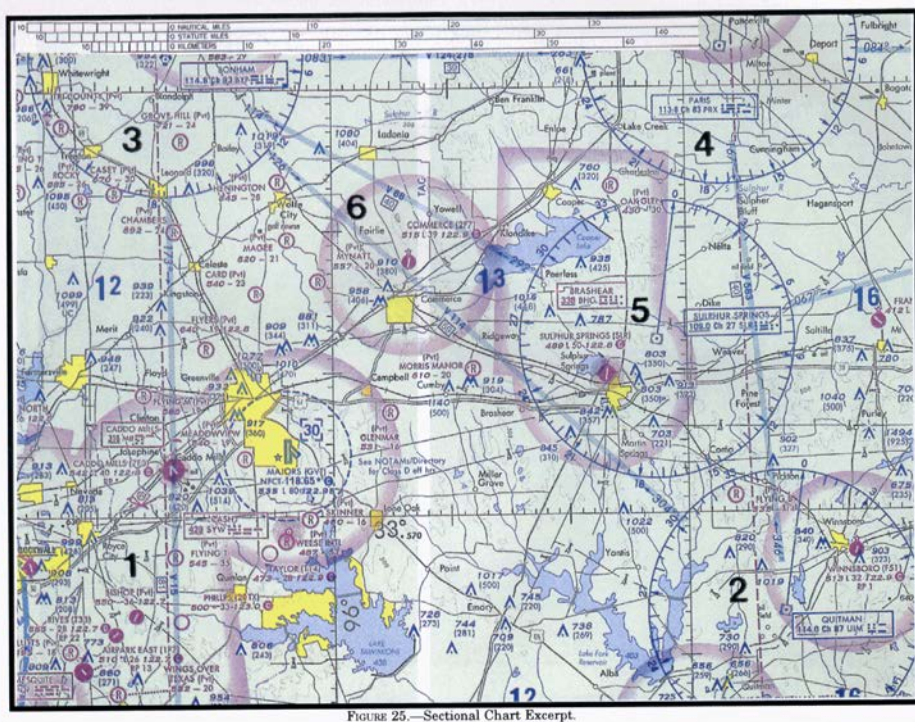


FIGURE 25.—Sectional Chart Excerpt.

原始題號:0015339 題組:3 難易度:中

- (A) 27. (Refer to Figure 5.) On what course should the VOR receiver (OBS) be set in order to navigate direct from Majors Airport (area 1) to Quitman VORTAC (area 2)? (如圖A58_Fig5)
 (A) 101° (B) 108° (C) 281°

題目圖：

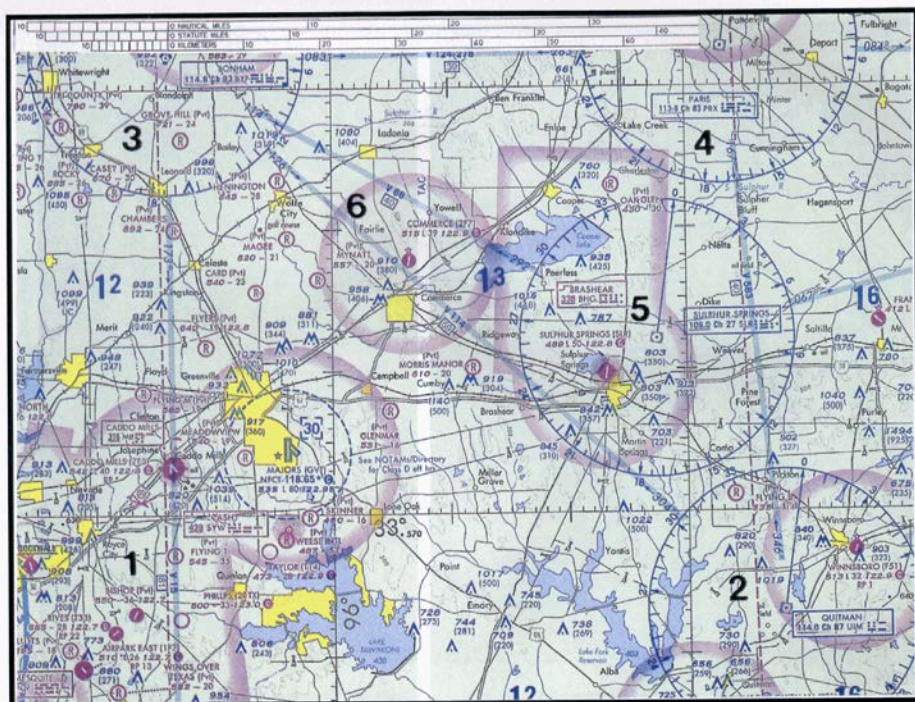


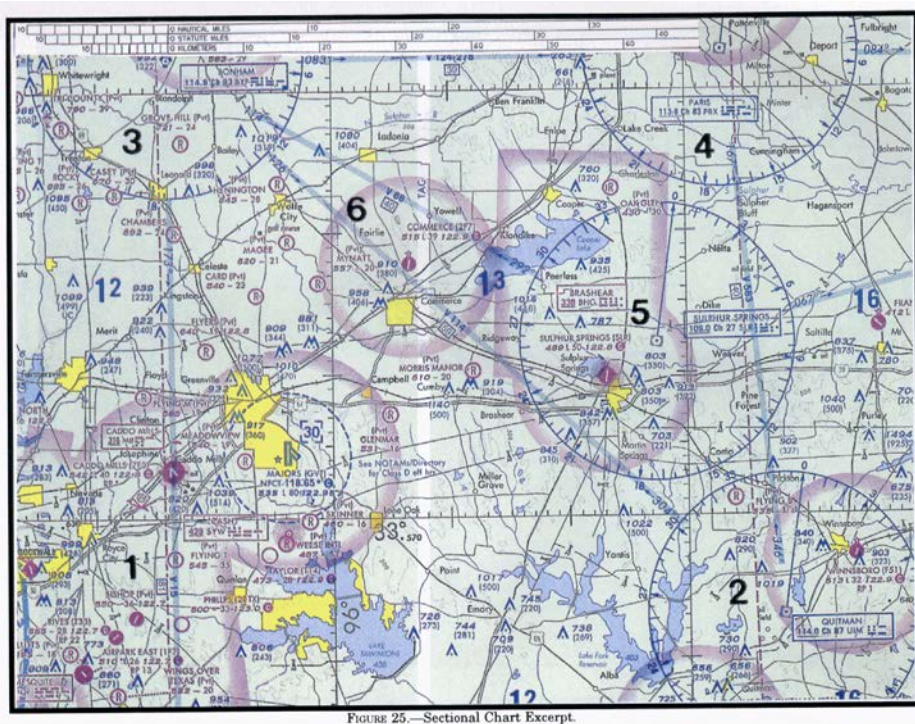
FIGURE 25.—Sectional Chart Excerpt.

原始題號:0015340 題組:4 難易度:中

(B) 28. (Refer to Figure 5, area 1.) What minimum altitude is necessary to vertically clear the obstacle on the northeast side of Airpark East Airport by 500 feet?" (如圖A58_Fig5)

(A)"1,100 feet MSL." (B)"1,273 feet MSL." (C)"1,283 feet MSL."

題目圖：

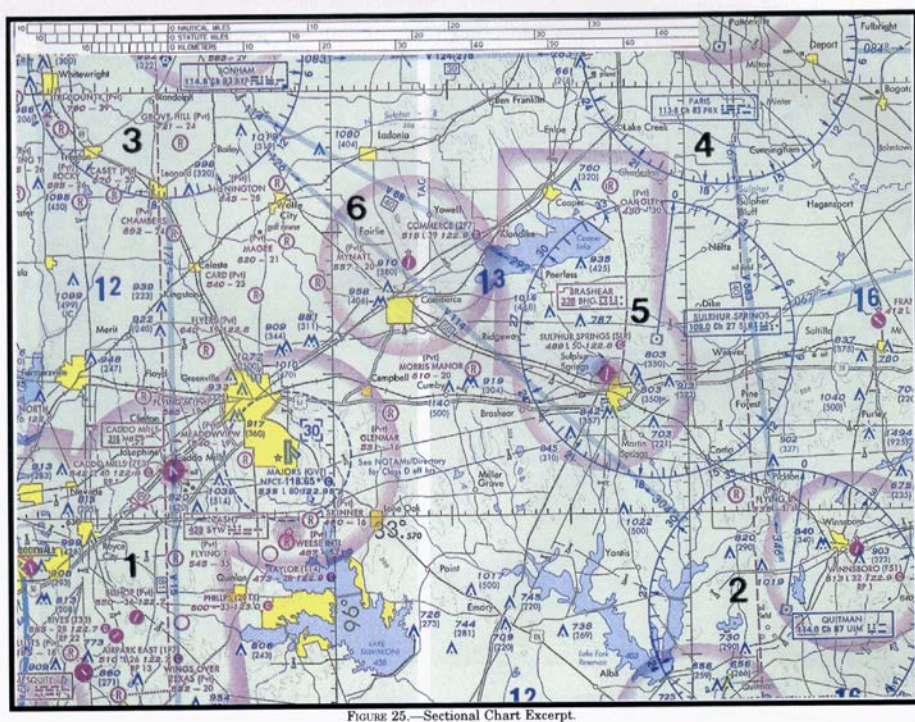


原始題號:0015341 題組:5 難易度:中

(C) 29. (Refer to Figure 5, area 2.) What minimum altitude is necessary to vertically clear the obstacle on the southeast side of Winnsboro Airport by 500 feet?" (如圖A58_Fig5)

(A)823 feet MSL. (B)"1,013 feet MSL." (C)"1,403 feet MSL."

題目圖：



原始題號:0015342 題組:1 難易度:中

- (B) 30. (Refer to Figure 5.) The VOR is tuned to Bonham VORTAC (area 3), and the aircraft is positioned over the town of Sulphur Springs (area 5). Which VOR indication is correct?" (如圖A58_Fig5)
 (A)1. (B)7. (C)8.

題目圖：

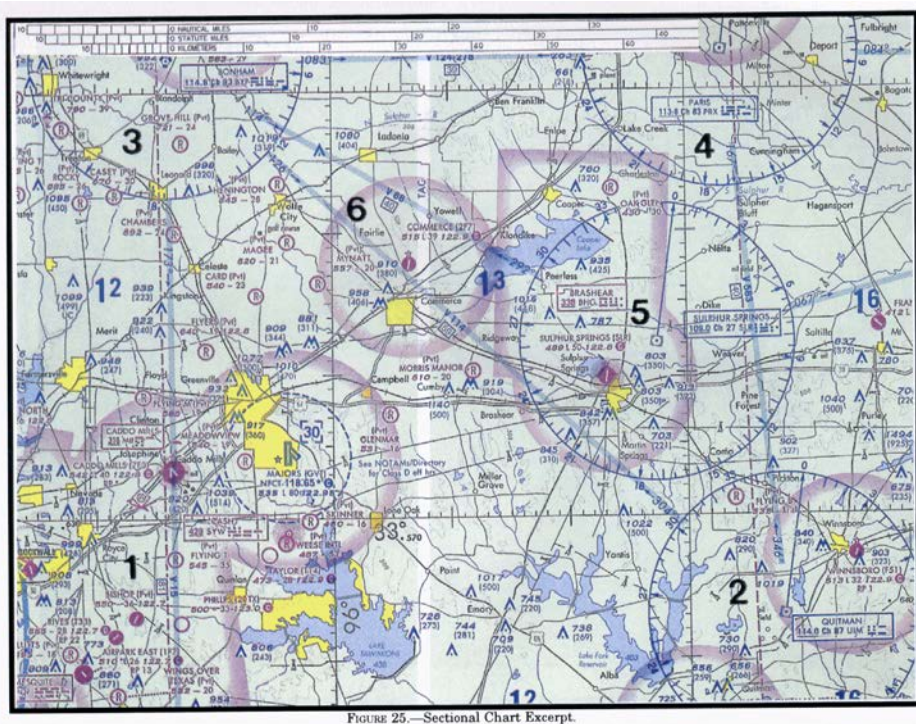


FIGURE 25.—Sectional Chart Excerpt.

原始題號:0015343 題組:2 難易度:中

- (A) 31. (Refer to Figure 6, area 5.) The VOR is tuned to the Dallas/ Fort Worth VORTAC. The omnibearing selector (OBS) is set on 253° , with a TO indication, and a right course deviation indicator (CDI) deflection. What is the aircraft's position from the VORTAC?" (如圖A58_Fig6)
 (A)East-northeast. (B)North-northeast. (C)West-southwest.

題目圖：

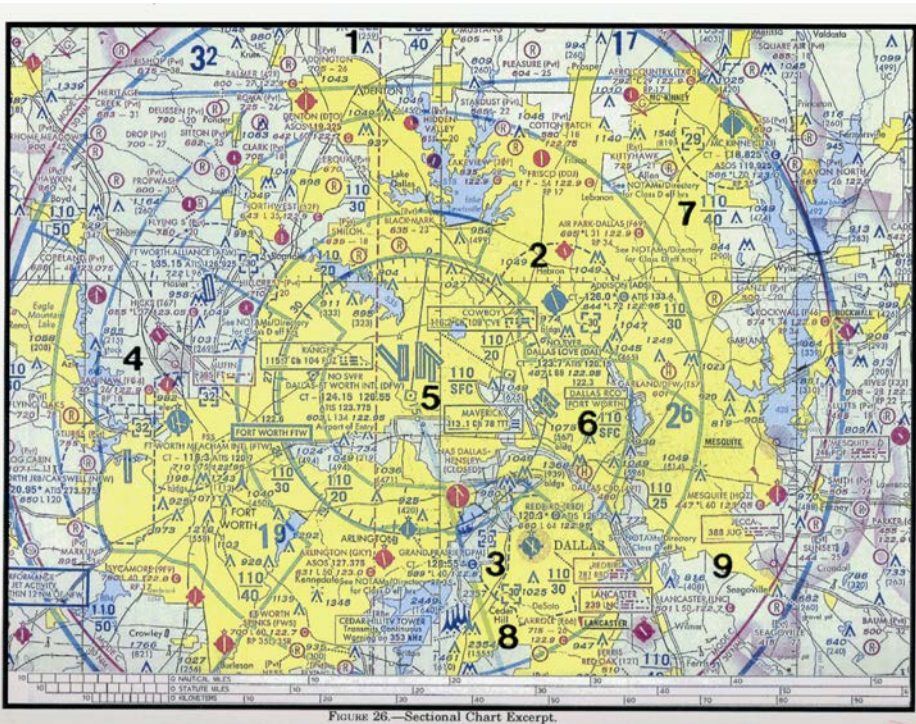
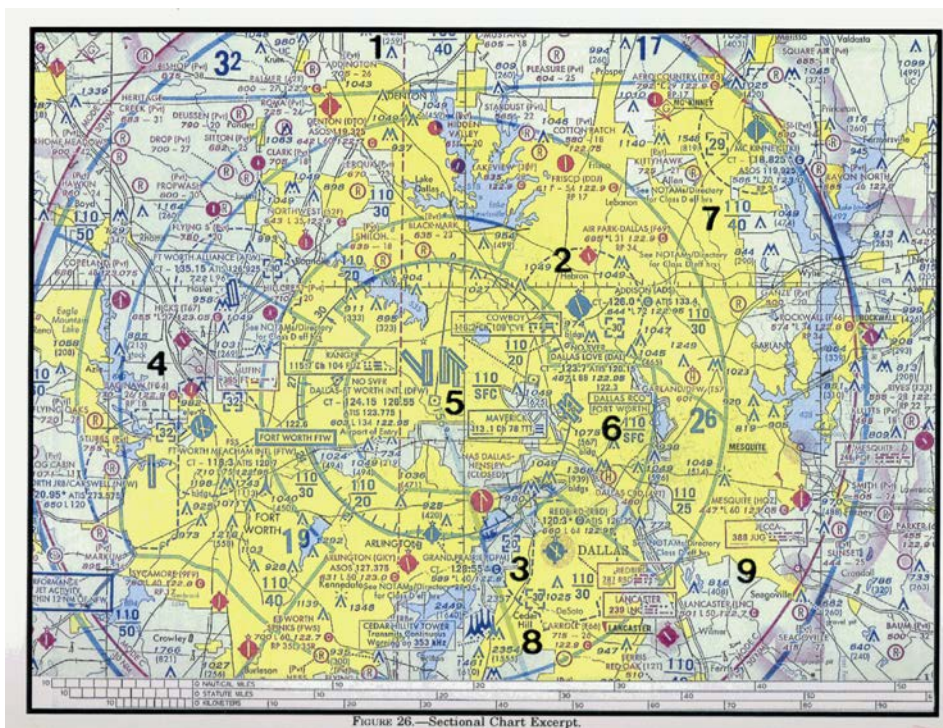


FIGURE 26.—Sectional Chart Excerpt.

原始題號:0015344 題組:3 難易度:中

- (B) 32. (Refer to Figure 6, area 8.) What minimum altitude is required to fly over the Cedar Hill TV towers in the congested area south of NAS Dallas? (如圖A58_Fig6)
 (A)"2,555 feet MSL." (B)"3,449 feet MSL." (C)"3,349 feet MSL."

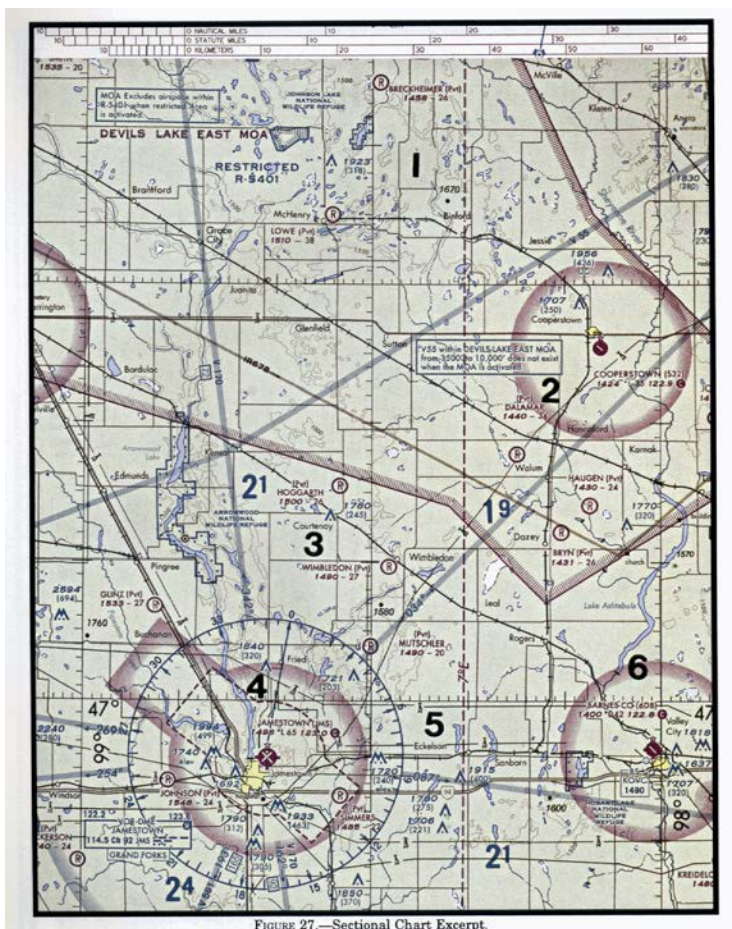
題目圖：



原始題號:0015345 題組:1 難易度:中

- (A) 33. (Refer to Figure 7.) Determine the magnetic course from Breckheimer (Pvt) Airport (area 1) to Jamestown Airport (area 4). (如圖A58_Fig7)
 (A)180°. (B)188°. (C)360°.

題目圖：



(A58) ATPL直昇機基本航行學

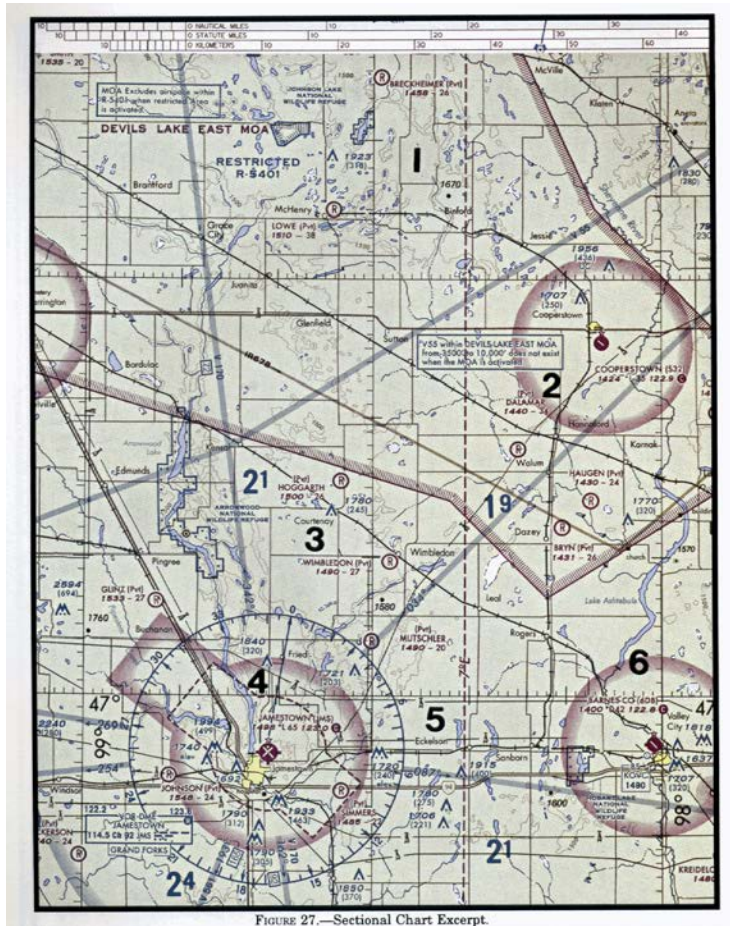
最近更新日期：無；更新題號：無

原始題號:0015346 題組:2 難易度:中

(A) 34. (Refer to Figure 7, area 2.) What is the approximate latitude and longitude of Cooperstown Airport?" (如圖A58_Fig7)

(A) 47°25' N - 98°06' W. (B) 47°25' N - 99°54' W. (C) 47°55' N - 98°06' W.

題目圖：



原始題號:0015347 題組:1 難易度:中

(B) 35. (Refer to Figure 7, area 4 and 3.) The VOR is tuned to Jamestown VOR, and the aircraft is positioned over Cooperstown Airport. Which VOR indication is correct?" (如圖A58_Fig7)

(A) 1. (B) 6. (C) 4.

題目圖：

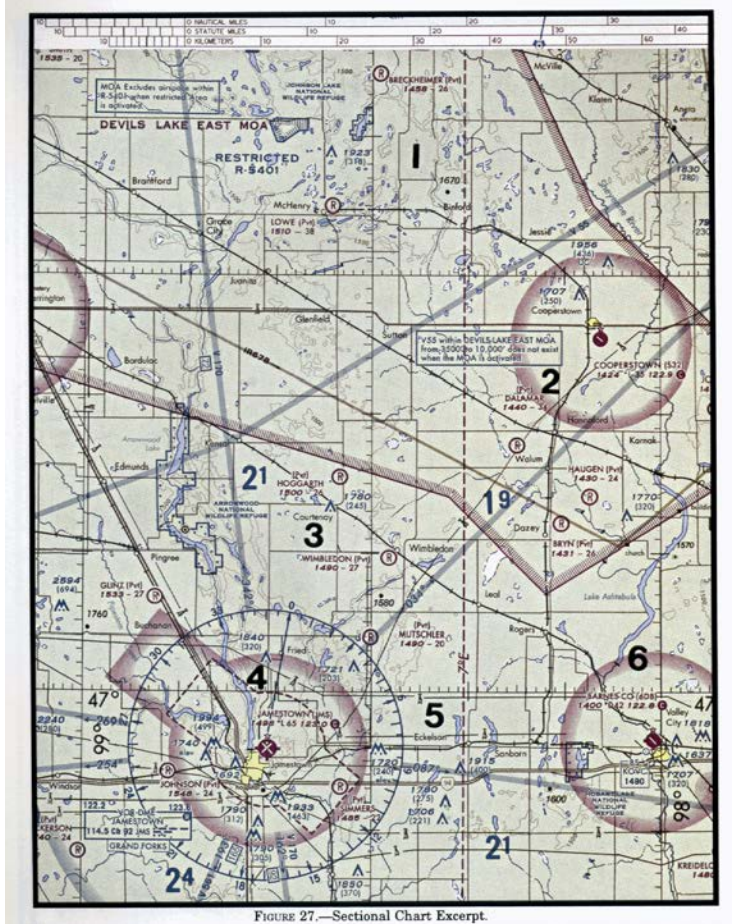


FIGURE 27.—Sectional Chart Excerpt.

原始題號:0015348 題組:1 難易度:中

- (C) 36. (Refer to Figure 9, illustration 1.) The VOR receiver has the indications shown. What is the aircraft's position relative to the station?" (如圖A58_Fig9)
(A)North. (B)East. (C)South.

題目圖：

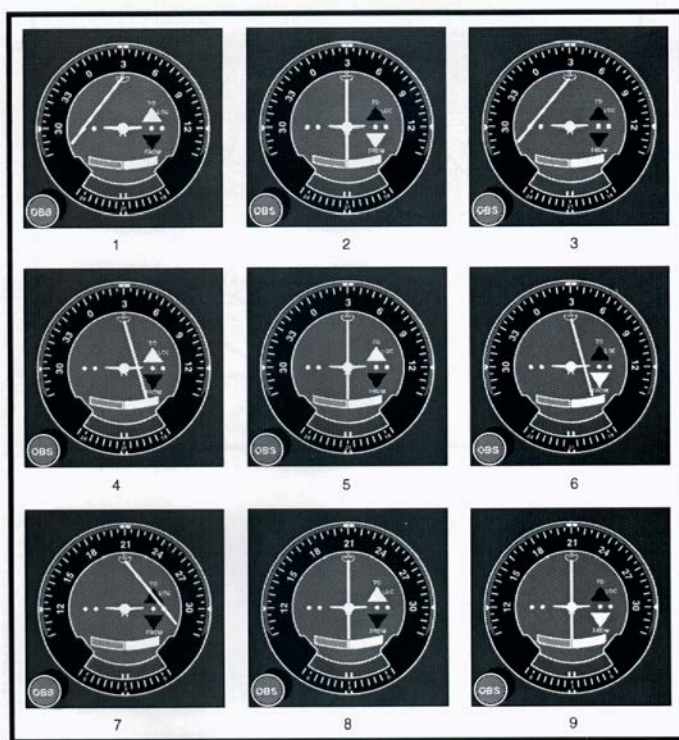


FIGURE 29.—VOR.

原始題號:0015349 題組:2 難易度:中

- (B) 37. (Refer to Figure 9, illustration 3.) The VOR receiver has the indications shown. What is the aircraft's position relative to the station?" (如圖A58_Fig9)
 (A) East. (B) Southeast. (C) West.

題目圖：

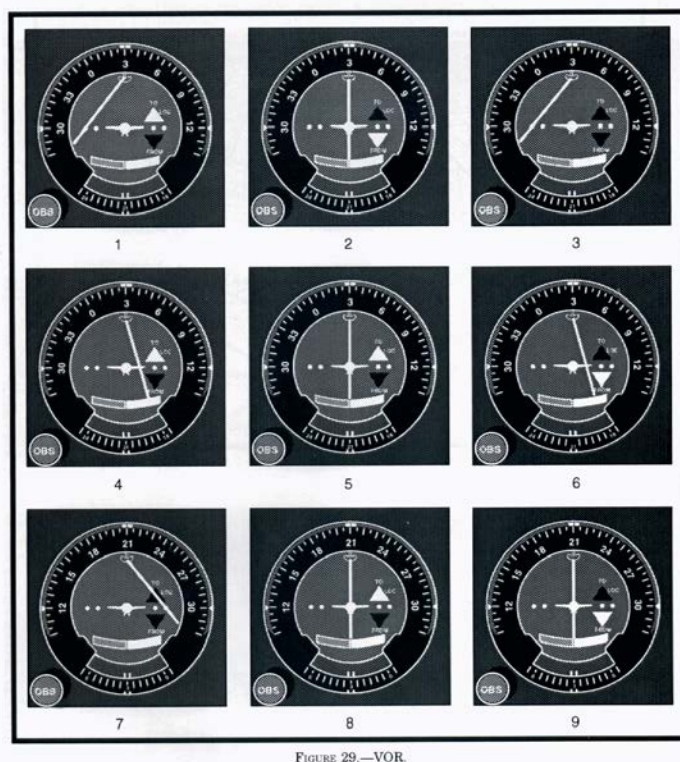


FIGURE 29.—VOR.

原始題號:0015350 題組:3 難易度:中

- (A) 38. (Refer to Figure 9, illustration 8.) The VOR receiver has the indications shown. What radial is the aircraft crossing?" (如圖A58_Fig9)
 (A) 030° (B) 210° (C) 300°

題目圖：

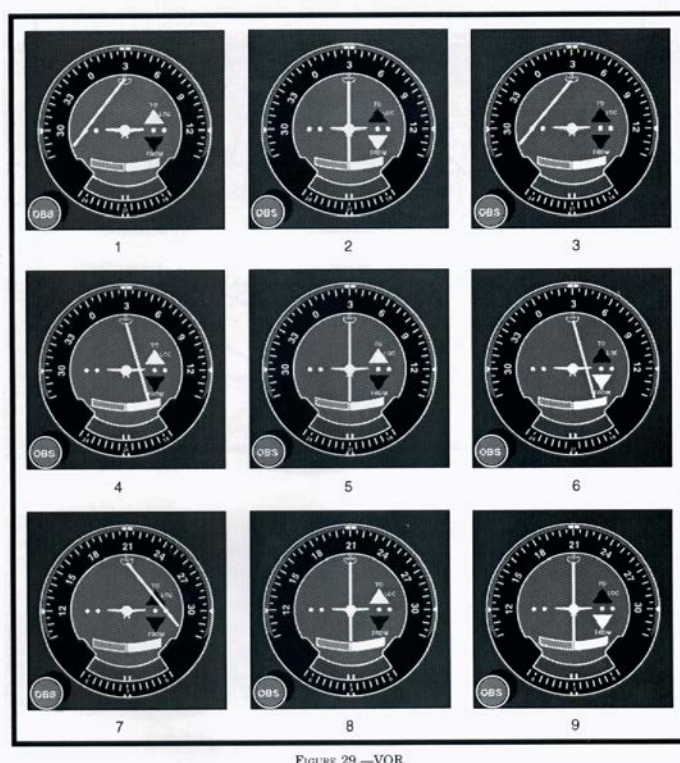


FIGURE 29.—VOR.

原始題號:0015351 題組:2 難易度:中

- (A) 39. (Refer to Figure 13) Departure point-Georgetown Airport (Q61), Departure time-0637, Wind aloft forecast (FD) at your altitude-1008, Airspeed-8kts. At 0755, the aircraft should be (如圖A58_Fig13)
- (A) over Auburn Airport (AUN). (B) over the town of Auburn. (C) slightly west of the town of Gargen Valley.

題目圖：

